

# **FIRE DEATHS IN MARYLAND**



**January - June  
2016**

**OFFICE OF THE STATE FIRE MARSHAL**

**FIRE DEATHS IN MARYLAND**

**January – June 2016**

During the first half of 2016, there were 20 fires that resulted in 23 deaths in the 23 Maryland counties and Baltimore City. Those deaths are a 34% decrease in comparison to the 35 deaths reported in 2015, and the equivalent to the 35 deaths reported in 2014 for the same period.

**ALLEGANY COUNTY** - During January through June 2016, Allegany County reported one fire death compared to no fire deaths reported in 2015, and one fire death reported in 2014 for the same period. An undetermined residential fire claimed the life of a 53 year old male. The victim was found unconscious inside his burning home by fire fighters, and despite rescue efforts the victim was pronounced deceased at a nearby medical center. The investigation revealed there were no working smoke alarms found in the dwelling.

**ANNE ARUNDEL COUNTY** - Anne Arundel County reported in the first six months of 2016, one fire death representing a welcome decrease compared to the ten fire deaths resulting from three fires in 2015, and one fire death in 2014. A 60 year old female was rescued by firefighters after calling 911 to report a fire inside her townhome. Unfortunately, the victim later succumbed to her injuries sustained during the fire. Conditions of hoarding were reported by rescuers, there were no smoke alarms found in the home, and smoking while on home oxygen is suspected even though the reported fire cause remains undetermined.

**BALTIMORE CIY** - The five deaths in five fatal fires reported by Baltimore City for the first half of 2016, represent an almost 17 percent decrease in comparison to the six fire deaths reported in 2015, and a nearly 55 percent decrease compared to the 11 fire deaths reported in 2014 during the same period. A dwelling fire determined to have been the result of Homicide/Arson claimed the life of a 64 year old female. A second female occupant escaped the fire without injury and was able to provide investigators with a direct eye witness account, placing an adult male suspect at the scene, who was observed pouring an ignitable fluid inside the home and setting the fire. There were smoke alarms present in the home, but they did not activate. Smoke alarms were determined to be present and operating during a residential fire that resulted in the demise of a 90 year old male. The victim's clothing ignited after coming too close to the burner on the stove top while cooking, and subsequently the victim was unable to extinguish the fire. Unattended cooking was the cause of an apartment fire resulting in the death of a 24 year old male victim. Smoke alarms were determined to have been present and operating during the incident. A 54 year old male perished in a dwelling fire where smoke alarms were found, but activation was not known. The cause of the fire was determined to have been the result of electrical malfunction. A second floor bedroom fire claimed the life of a 60 year old male who succumbed to his injuries incurred during the blaze. Smoke alarms equipped with 9-volt batteries were reported present in the home, but they did not activate. The cause of the fire was determined to have been the result of electrical malfunction.

**BALTIMORE COUNTY** - Baltimore County reported four deaths in four fires during the first six months of this year, a decrease from the five fire deaths reported during that time in 2015, but an increase from the three fire deaths in 2014. One undetermined residential fire claimed the life of an 85 year old male who succumbed to his injuries sustained after re-entering his burning home in an attempt to rescue his disabled wife. The victim's wife was rescued, treated for smoke inhalation at a local medical center and later released. An apartment fire caused the demise of an 80 year old female who succumbed to thermal burn injuries incurred after her clothing caught on fire while cooking. A 66 year old female perished in a townhome fire that started in the upstairs front bedroom. The victim's escape may have been compromised by her physical disability and reported conditions of hoarding. An accidental fire resulted from a cooking mishap whereby a 92 year old victim caught her clothes on fire after coming too close to the stove top burner. The physically disabled victim activated the medical alert switch on her persons, but was unable to extinguish the fire.

**OFFICE OF THE STATE FIRE MARSHAL**

**FIRE DEATHS IN MARYLAND**

**January – June 2016**

**CALVERT COUNTY** - There were no fire deaths reported in Calvert County during the first half of 2016, compared to one fire death in 2015, and no fire deaths in 2014 for the same reporting period.

**CAROLINE COUNTY** - Caroline County reported in the first six months of 2016, one fire death compared to no fire deaths in 2015 and 2014. Smoking while on home oxygen resulted in the fire death of a 65 year old female. The investigation revealed that smoke alarms were present and operating at the time of the incident; however, the victim's ability to extinguish the fire was hampered by her physical disability.

**CARROLL COUNTY** - During the months of January through June 2016 and 2015, Carroll County reported no fire deaths, compared to one fire death in 2014.

**CECIL COUNTY** - Between the time span of January and June 2016, Cecil County reported one fire death which remains unchanged in comparison to the one fire death in 2015 and 2014 during the same time period. An undetermined dwelling fire with rescue efforts challenged by reported conditions of hoarding, resulted in the loss of life of a 69 year old male. It is unknown if smoke alarms were present and/or activated during the blaze.

**CHARLES COUNTY** - There were no fire deaths reported in Charles County during the first half of 2016, compared to two fire deaths in 2015, and no fire deaths in 2014 for the same six month period.

**DORCHESTER COUNTY** - January through June 2016, 2015, and 2014, Dorchester County reported no fire deaths.

**FREDERICK COUNTY** - During January through June 2016, Frederick County reported one fire death which was an increase compared to no fire deaths occurring in previous years, 2015 and 2014. A tractor trailer crash and subsequent fire resulted in the death of a 58 year old male who lost control of the rig while traveling around a left roadway curve. The investigation did not reveal what caused the driver to lose control of the vehicle.

**GARRETT COUNTY** - Garrett County reported one fire death in the first half of 2016, compared to no fire deaths reported for the same time period in 2015 and 2014. A 38 year old female succumbed to her injuries sustained in an undetermined residential fire that originated in the interior living room. Smoke alarms were present and operating at the time of the fire.

**HARFORD COUNTY** - Between the reporting months, January through June 2016, Harford County reported no fire deaths, in comparison to the same period in 2015 where there was one reported fire death, and no fire deaths reported in 2014.

**KENT COUNTY** - There were no fire deaths reported in Kent County during the first six months of 2016, in comparison to one fire death reported in 2015, and no fire deaths reported in 2014.

**HOWARD COUNTY** - In the time period of January through June 2016, Howard County reported one fire death which is an increase in comparison to no fire deaths in 2015, but a decrease in comparison to the two fire deaths in 2014 for the same bi-annual reporting period. A 66 year old male reportedly doused himself in gasoline and set himself on fire. After the self-immolization, the victim drove his vehicle on the interstate and flagged down a Howard County Police Officer for help. The victim later succumbed to his injuries after being transported to a medical burn center.

**OFFICE OF THE STATE FIRE MARSHAL**

**FIRE DEATHS IN MARYLAND**

**January – June 2016**

**MONTGOMERY COUNTY** - One fire death was reported in Montgomery County for the first six months of 2016, compared to no fire deaths reported in 2015, and four fire deaths reported in 2016 for the same six month reporting period. A tent that was pitched too close to an active fire pit was most likely to blame for the fire death of a 46 year old white male who was temporarily residing in the tent at a homeless camp.

**PRINCE GEORGE'S COUNTY** - Two unrelated fires each claimed the lives of five people in Prince George's County during the first six months of 2016 which revealed no change compared to the first half of 2015 where there were five reported deaths in five fires, but an increase for the same time period in 2014 with two deaths and two fires reported. An undetermined multi-death residential fire claimed the the lives of four victims, two adults aged 55 and 63, and two 2 year old twins. There were no working smoke alarms found in the home. Improperly discarded smoking materials was the cause of a residential fire that claimed the life of a 68 year old male. The victim was transported to a medical burn unit where he later succumbed to his injuries. Smoke alarms were found to be operating during the time of the fire.

**QUEEN ANNE'S COUNTY** - During the first six months of 2016, Queen Anne's County reported one fire death, compared to one fire death in 2015, and no fire deaths in 2014 during the same period. A 77 year old white male was investigating a fire originating in the floor joist of his home when he incurred smoke inhalation which attributed to his demise. Evidence revealed a rodent had entered the joist space and chewed on wiring allowing electrical arcing to ignite combustibles. No working smoke alarms were found to be operational at the time of the fire.

**ST. MARY'S COUNTY** - St. Mary's County reported in the first half of 2016 and 2015, no fire deaths, and no fire deaths in 2014 for the same reporting period.

**SOMERSET COUNTY** - No fire deaths were revealed by Somerset County in the reporting period January through June 2016 or 2015, compared to one fire death revealed in 2014 for the same time frame.

**TALBOT COUNTY** - Talbot County reported no fire deaths during the reporting period January through June 2016, 2015 or 2016.

**WASHINGTON COUNTY** - Reporting periods January through June 2016 and 2015 revealed no fire deaths in Washington County, compared to one fire death for the same period in 2014.

**WICOMICO COUNTY** - During the first half of 2016, Wicomico County reported no fire deaths, in comparison to one fire death reported in 2015, and four fire deaths reported in 2014 for the same period.

**WORCESTER COUNTY** - The first six months of 2016 revealed no fire deaths in Worcester County, compared to two fire deaths in 2015, and no fire deaths in 2014 during the same time duration.

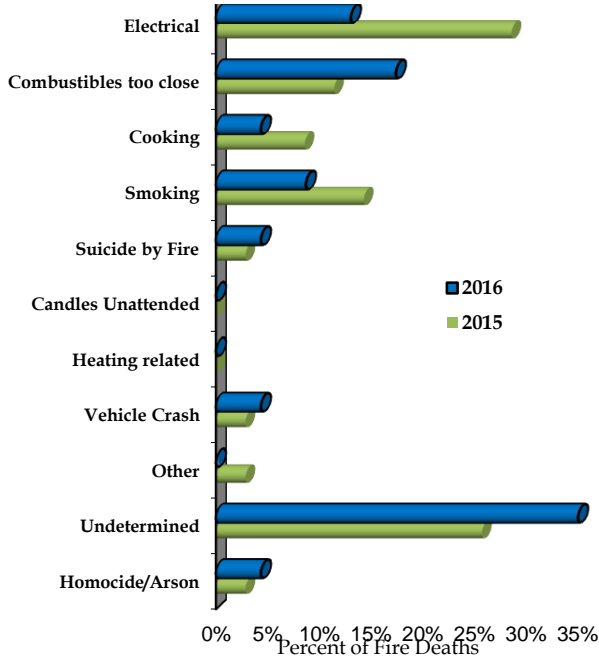
Following is a summary of the fire deaths reported to the State Fire Marshal during the first six months of 2016. Also included are summary tables of fire deaths for reporting years 2012 through 2016. The number of fire deaths in Maryland, by county, for the five-year period 2012 through 2016 are listed on page 12.

**Office of the State Fire Marshal**  
**FIRE DEATHS IN MARYLAND**  
**January - June 2016**

**During the first half of 2016, there were 20 fires that resulted in 23 deaths in the 23 Maryland counties and Baltimore City.** Those deaths are strikingly less than the 35 deaths reported in 2015 and 2014, reflecting a 34 percent decrease in comparison to the two previous years for the same period.

Fires attributed to an *Undetermined* cause resulted in more deaths from fires than from any other cause during the first half of 2016. Eight adults and two children, ranging in ages from 2 to 85, died in seven separate undermined fires, with one fire resulting in multiple-deaths. The multi-fatal fire claimed the lives of two adults and two children, and there were no working smoke alarms found in the home. One undetermined fire claimed the life of a 66 year old female whose chances of escape may have been hampered by conditions of hoarding and a physical disability. An 85 year old male succumbed to his burn injuries sustained while attempting to rescue his disabled wife from the burning structure. A 38 year old unconscious female victim was located in the bedroom area of her burning home by firefighters, but was later pronounced deceased at a local medical center. A 69 year old male perished in a dwelling fire with conditions of hoarding reported by firefighters. A dwelling fire that originated in the bedroom claimed the life of a 53 year old male. Smoking while on oxygen is the suspected cause of an undetermined dwelling fire that resulted in the demise of a 66 year old female.

**CAUSES OF FATAL FIRES**



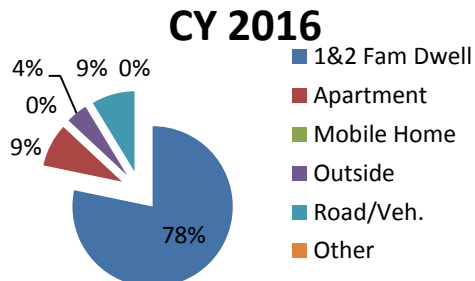
*Combustibles too Close* to heat source was the cause of four deaths in four separate fires between January and June 2016. One homeless camp resident perished in a tent fire, and the other three deaths occurred in non-related residential structure fires. The ages of the victims ranged from 46 to 92 years.

**LOCATION OF FATAL FIRES**

During the first six months of 2016, as in other years, most fire deaths occurred in *Residential Structures*. Approximately 87 percent of the fire deaths were in residential fires, including 20 deaths in 17 fires. Further breakdown of the residential structure category revealed 18 deaths in 15 *One & Two Family Dwelling* fires and two deaths in two unrelated *Apartment* fires. This year, those deaths represented a relatively larger proportion of all deaths, compared to 80 percent during the first half of 2015. The remaining fire fatality locations claimed the lives of three victims in three unrelated fires and were reported as follows: *Road/Vehicle* - (two deaths/two fires) and *Outside* (one death/one fire).

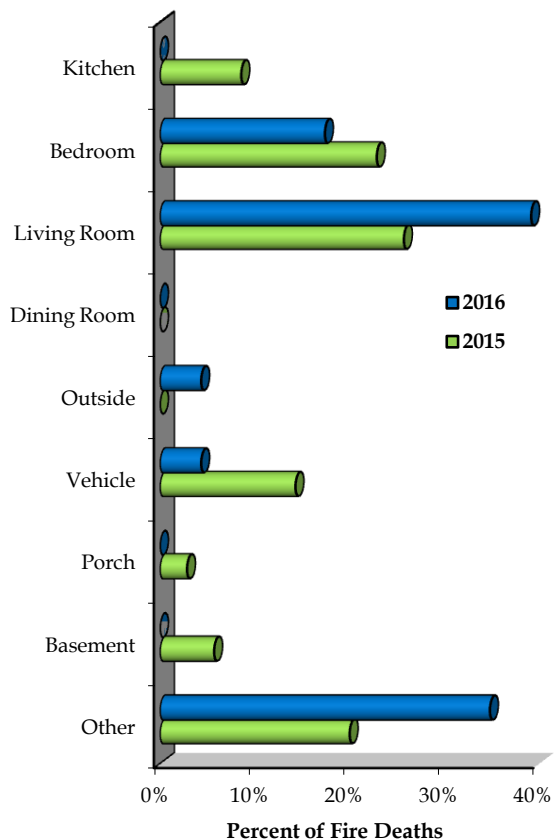
Three unrelated dwelling fires claimed the lives of three victims, ranging in age from 54 to 77 years. All three fires were determined to have been related to *Electrical Malfunction*.

Six separate fires resulted in the death of six victims with each cause attributed to the following: *Homicide/Arson* - one death, *Suicide/Self-Immolation* - one death, *Cooking Related* - one death, *Smoking Related* - two deaths and *Vehicle Crash* - one death.



**Office of the State Fire Marshal**  
**FIRE DEATHS IN MARYLAND**  
**January - June 2016**

**AREA OF FIRE ORIGIN**



Six fires that started in the *Living Room*/great room/family room claimed nine lives during the first six months of 2016. One of the fires was an undetermined multi-fatal fire which claimed the lives of two adults and two children. Three other undetermined and unrelated fires resulted in the deaths of three adults, and two separate smoking related fires claimed the lives a 65 year old female and a 68 year old male.

Fires originating in the *Bedroom* claimed four victims in four separate fires between January and June 2016. The victims were three males and one female ranging in age from 24 to 66 years old, with the fires determined to be as follows: one cooking related, one electrical malfunction, and two undetermined.

An *Outside* tent fire in a homeless camp entrapped a 46 year old male resulting in his demise. The fire cause remains undetermined at this time.

A tractor trailer accident and subsequent fire claimed the life of a 58 year old male after the victim became entrapped in the *Vehicle* directly following the crash. It is unknown why the driver lost control of the tractor trailer.

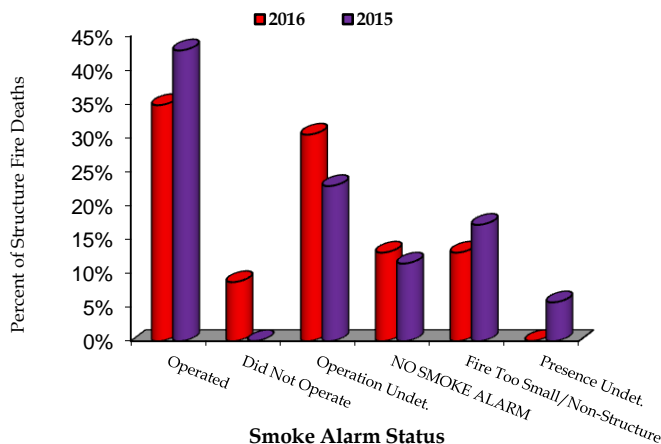
The graph category, *Other* areas of fire origins, included the following: First Floor, Victim, and Undetermined. Three separate fires originating on the First Floor, with no clear designation of room purpose, claimed the lives three victims. The first fire was intentionally set resulting in the death of a 64 year old female. The second and third fires were both determined to have been caused by electrical malfunction resulting in the death of two males, age 54 years and 77 years old. Four separate fires were *Victim* originated with three fires caused by clothing/combustibles coming too close to heat source, and one fire related to suicide by fire. One *Undetermined* area of origin fire that was complicated by hoarding conditions resulted in the fire death of a 69 year old male.

**SMOKE ALARM PERFORMANCE**

Twenty (20) people died in 17 residential *structure* fires during the first six months of 2016. The smoke alarm was known to function properly in eight residential structure fires where eight victims perished.

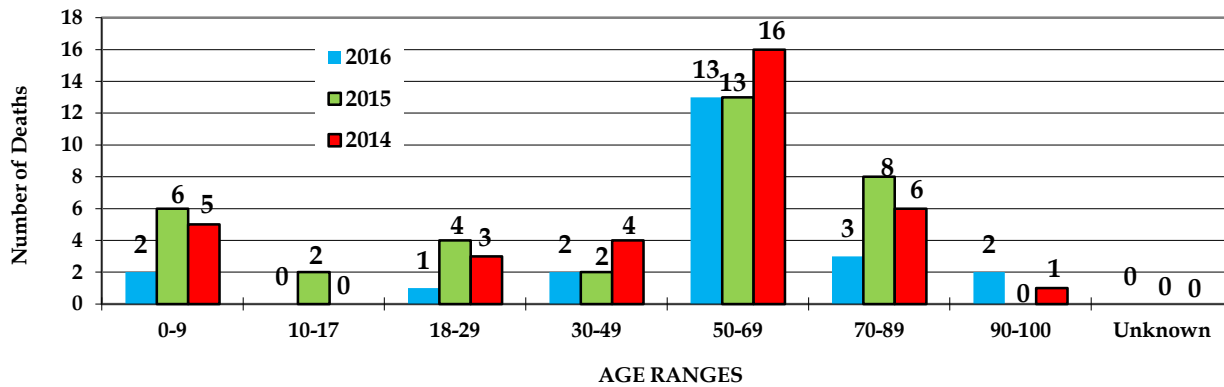
Three victims died in three fires where no smoke alarms were present, while seven deaths occurred in four fires where the presence/operation of a smoke alarm was not determined.

Two deaths occurred in two fires where a smoke alarm was present, but did not operate.



Office of the State Fire Marshal  
**FIRE DEATHS IN MARYLAND**  
 January - June 2016

**AGE OF FIRE DEATH VICTIMS**



During the January to June time period:

**Two children died in one fire during the first six months of 2016. Fire victims younger than 18 years accounted for almost 9 percent of the fire deaths this year, a significant decrease compared to eight such deaths that accounted for almost 23 percent of the deaths for the first half of 2015, and 14 percent in 2014.**

**There was one fire death victim in the 18 to 29 years age range in 2016, compared to four victims in that age range in 2015, and three victims in 2014. Victims in that age range accounted for over 4.3 percent of the fire deaths in 2016, 11.4 percent in 2015, and 8.5 percent in 2014.**

**The two victims in the 30 to 49 years age range accounted for just over 8 percent of the fire deaths in 2016, compared to two victims in that age range who accounted for over 8 percent of the fire death victims in 2015, and the four victims in that age range who accounted for just over 11 percent of the fire deaths in 2014.**

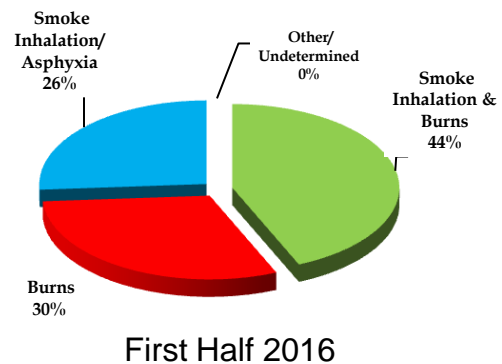
**In the first half of 2016, there were 13 fire deaths in the 50 to 69 years age range accounting for over 56 percent of the total fire deaths. In comparison to 2015 and 2014, over the same period, thirteen fire deaths (37 percent) were reported in 2015 and 16 fire deaths (over 45 percent) in 2014.**

**Three fire death victims in the age range of 70 to 89 years were reported during the first six months of 2016, accounting for 13 percent of the total deaths during that period. This compares to eight (almost 23 percent) of the fire deaths in 2015 and six (17 percent) in 2014.**

**January through June 2016 claimed two fire death victims in the 90 to 100 years age range who accounted for almost 9 percent of the total fire deaths, compared to no fire deaths in 2015, and one (almost 3 percent) in 2014.**

**CAUSE OF DEATH OF FIRE VICTIMS**

This year, as in the previous year, the combination of smoke inhalation and burns claimed the lives of ten people during the first six months of 2016, accounting for a lower proportion of deaths (44 percent) than in 2015 (46 percent) and 2014 (34 percent). There were six fire victims who died as the result of smoke inhalation, and the effect of burns was the reported cause of death of seven victims this year.



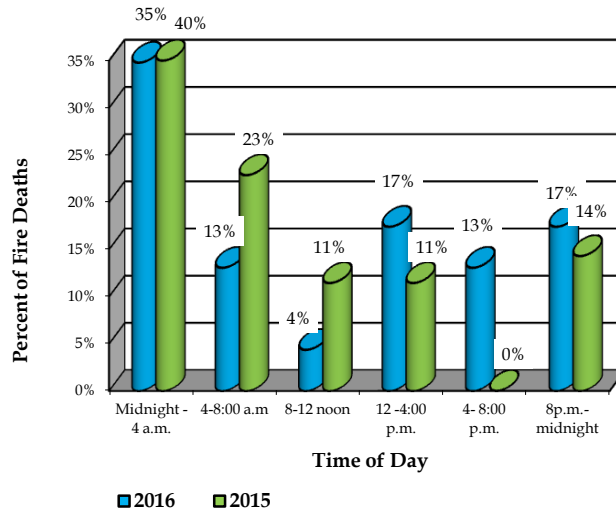
**Office of the State Fire Marshal**  
**FIRE DEATHS IN MARYLAND**  
**January - June 2016**

**TIME OF FATAL FIRES**

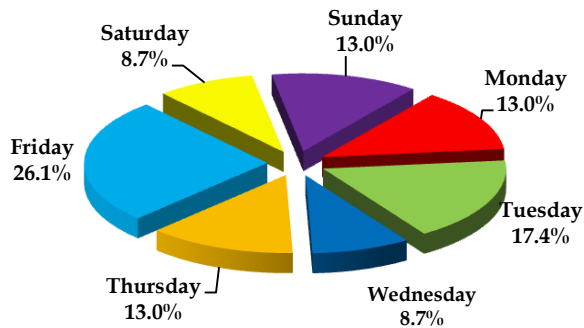
During the first half of 2016, as in most previous years, the late night and early morning hours have proved to be more deadly than other time of the day.

This year, the nine fires that started between the hours of 10 p.m. and 6 a.m. claimed the lives of ten adults and two children, both children 2 years-old. Those 12 victims accounted for just over 52 percent of the 23 fire deaths reported in the first six months of the year.

There was only one multiple-death fire, resulting in four deaths, that was reported in the first half of 2016 which occurred during those 10 p.m. to 6 a.m. hours.



**DAY OF WEEK OF FATAL FIRES**



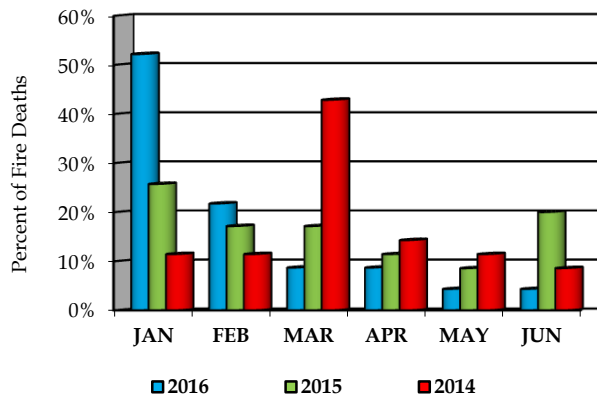
The weekend is historically the time when fire fatalities are more likely to occur, but was not quite the case thus far this year. The fatal fires that occurred on Monday through Thursday resulted in a total of 12 deaths in nine fires, accounting for 52 percent of the fire deaths during the first six months of 2016. Friday, Saturday and Sunday closely followed with 11 reported deaths in 11 fires which was 48 percent of the total deaths for the same period.

The one multiple-death fire reported during the first six months occurred on a Tuesday, and the fire remains undetermined.

**MONTH OF YEAR**

Similar to previous years, more fire deaths occurred during the first three months of 2016 than in the second quarter. Eighty-three (83) percent of the fire deaths in the first half of this year occurred during the first three months. Nineteen (19) people were victims of 16 fatal fires during that time. Seventeen (17) percent of the fire deaths occurred between April and June 2016 which included a total of four deaths in four fires.

January was the deadliest month this year, with 12 deaths in nine fires accounting for almost 52 percent of the fire deaths during the first six months of 2016. The only reported multiple-death fire occurred in January claiming the lives of two adults and two children. The cause of the multiple-death fire remains undetermined.





## Office of the State Fire Marshal

## FIRE DEATHS IN MARYLAND

January - June 2016

COUNTY	FIRE CAUSE											FIRE DEATHS		FATAL FIRES	
	Smoking	Cooking	Electrical	Combustibles too close	Arson Homicide	Suicide	Heating Related	Candle unattended	Vehicle Crash	Under Invest.	Undeter mined	Total Deaths	Percent of Total	Total Fires	Percent of Total
Allegany	0	0	0	0	0	0	0	0	0	0	1	1	4.3%	1	5.0%
Anne Arundel	0	0	0	0	0	0	0	0	0	0	1	1	4.3%	1	5.0%
Baltimore City	0	1	2	1	1	0	0	0	0	0	0	5	21.7%	5	25.0%
Baltimore County	0	0	0	2	0	0	0	0	0	0	2	4	17.4%	4	20.0%
Calvert	0	0	0	0	0	0	0	0	0	0	0	0	0.0%	0	0.0%
Caroline	1	0	0	0	0	0	0	0	0	0	0	1	4.3%	1	5.0%
Carroll	0	0	0	0	0	0	0	0	0	0	0	0	0.0%	0	0.0%
Cecil	0	0	0	0	0	0	0	0	0	0	1	1	4.3%	1	5.0%
Charles	0	0	0	0	0	0	0	0	0	0	0	0	0.0%	0	0.0%
Dorchester	0	0	0	0	0	0	0	0	0	0	0	0	0.0%	0	0.0%
Frederick	0	0	0	0	0	0	0	0	1	0	0	1	4.3%	1	5.0%
Garrett	0	0	0	0	0	0	0	0	0	0	1	1	4.3%	1	5.0%
Harford	0	0	0	0	0	0	0	0	0	0	0	0	0.0%	0	0.0%
Howard	0	0	0	0	0	1	0	0	0	0	0	1	4.3%	1	5.0%
Kent	0	0	0	0	0	0	0	0	0	0	0	0	0.0%	0	0.0%
Montgomery	0	0	0	1	0	0	0	0	0	0	0	1	4.3%	1	5.0%
Prince George's	1	0	0	0	0	0	0	0	0	0	1	5	21.7%	2	10.0%
Queen Anne's	0	0	1	0	0	0	0	0	0	0	0	1	4.3%	1	5.0%
St. Mary's	0	0	0	0	0	0	0	0	0	0	0	0	0.0%	0	0.0%
Somerset	0	0	0	0	0	0	0	0	0	0	0	0	0.0%	0	0.0%
Talbot	0	0	0	0	0	0	0	0	0	0	0	0	0.0%	0	0.0%
Washington	0	0	0	0	0	0	0	0	0	0	0	0	0.0%	0	0.0%
Wicomico	0	0	0	0	0	0	0	0	0	0	0	0	0.0%	0	0.0%
Worcester	0	0	0	0	0	0	0	0	0	0	0	0	0.0%	0	0.0%
<b>TOTAL FIRE DEATHS</b>	<b>2</b>	<b>1</b>	<b>3</b>	<b>4</b>	<b>1</b>	<b>1</b>	<b>0</b>	<b>0</b>	<b>1</b>	<b>0</b>	<b>7</b>	<b>23</b>	<b>100%</b>	<b>20</b>	<b>100%</b>
Column % of All Fire Deaths	9%	4%	13%	17%	4%	4%	0%	0%	4%	0%	30%	100%			
<b>TOTAL FATAL FIRES</b>	<b>2</b>	<b>3</b>	<b>4</b>	<b>4</b>	<b>0</b>	<b>2</b>	<b>2</b>	<b>1</b>	<b>1</b>	<b>3</b>	<b>7</b>	<b>20</b>			
Column % of All Fatal Fires	10%	15%	20%	20%	0%	10%	10%	5%	5%	15%	35%	100%			

Office of the State Fire Marshal  
**FIRE DEATHS IN MARYLAND**  
 January - June

FIRE CAUSE	2012		2013		2014		2015		2016	
	Number of Deaths	Percent of Total	Number of Deaths	Percent of Total	Number of Deaths	Percent of Total	Number of Deaths	Percent of Total	Number of Deaths	Percent of Total
Smoking	2	9.1%	6	14.6%	3	8.6%	5	14.3%	2	8.7%
Combustibles too close	6	27.3%	8	19.5%	4	11.4%	4	11.4%	4	17.4%
Electrical Malfunction	2	9.1%	8	19.5%	5	14.3%	10	28.6%	3	13.0%
Heating Related	0	0.0%	1	2.4%	2	5.7%	0	0.0%	0	0.0%
Cooking Related	2	9.1%	1	2.4%	5	14.3%	3	8.6%	1	4.3%
Vehicle Crash	3	13.6%	1	2.4%	1	2.9%	1	2.9%	1	4.3%
Arson/Arson Homicide	0	0.0%	2	4.9%	0	0.0%	1	2.9%	1	4.3%
Open Flame	1	4.5%	3	7.3%	0	0.0%	0	0.0%	0	0.0%
Candles/Incense Unattended	0	0.0%	2	4.9%	2	5.7%	0	0.0%	0	0.0%
Suicide/Arson Suicide	2	9.1%	1	2.4%	2	5.7%	Category Sub-Divided		Category Sub-Divided	
Suicide/Incendiary	Category created in 2015 for further in-depth analysis						1	2.9%	0	0.0%
Suicide/Self-Immolation	Category created in 2015 for further in-depth analysis						1	2.9%	1	4.3%
Suicide/Arson	Category created in 2015 for further in-depth analysis						0	0.0%	0	0.0%
Child Playing	0	0.0%	1	2.4%	0	0.0%	0	0.0%	0	0.0%
Under Investigation	0	0.0%	1	2.4%	3	8.6%	0	0.0%	0	0.0%
Other/Undetermined	4	18.2%	6	14.6%	8	22.9%	9	25.7%	10	43.5%
<b>TOTAL DEATHS</b>	<b>22</b>	<b>100.0%</b>	<b>41</b>	<b>100.0%</b>	<b>35</b>	<b>100.0%</b>	<b>35</b>	<b>100.0%</b>	<b>23</b>	<b>100.0%</b>

DEATH CAUSE										
Smoke Inhalation & Burns	10	45.5%	22	53.7%	13	37.1%	15	42.9%	10	43.5%
Burns	7	31.8%	8	19.5%	8	22.9%	4	11.4%	7	30.4%
Smoke Inhalation/Asphyxia	3	13.6%	7	17.1%	12	34.3%	13	37.1%	6	26.1%
Other/Undetermined	2	9.1%	4	9.8%	2	5.7%	3	8.6%	0	0.0%

SEX OF VICTIM										
Male	14	63.6%	22	53.7%	26	74.3%	18	51.4%	14	60.9%
Female	8	36.4%	19	46.3%	9	25.7%	17	48.6%	9	39.1%

AGE OF VICTIM										
0 - 9	4	18.2%	4	9.8%	5	14.3%	6	17.1%	2	8.7%
10 - 17	2	9.1%	2	4.9%	0	0.0%	2	5.7%	0	0.0%
18 - 29	2	9.1%	1	2.4%	3	8.6%	4	11.4%	1	4.3%
30 - 49	3	13.6%	6	14.6%	4	11.4%	2	5.7%	2	8.7%
50 - 69	6	27.3%	19	46.3%	16	45.7%	13	37.1%	13	56.5%
70 - 89	3	13.6%	8	19.5%	6	17.1%	8	22.9%	3	13.0%
90 - 100	2	9.1%	1	2.4%	1	2.9%	0	0.0%	2	8.7%
Unknown	0	0.0%	0	0.0%	0	0.0%	0	0.0%	0	0.0%
		100.0%		100.0%		100.0%		100.0%		100.0%

Office of the State Fire Marshal

FIRE DEATHS IN MARYLAND

January - June

LOCATION OF FIRE	2012		2013		2014		2015		2016	
	Number of Deaths	Percent of Total	Number of Deaths	Percent of Total	Number of Deaths	Percent of Total	Number of Deaths	Percent of Total	Number of Deaths	Percent of Total
1-2 Family Home	8	36.4%	27	65.9%	29	82.9%	28	80.0%	18	78.3%
Apartment	8	36.4%	9	22.0%	2	5.7%	0	0.0%	2	8.7%
Mobile Home	0	0.0%	1	2.4%	2	5.7%	0	0.0%	0	0.0%
Hotel/Rmng House/Nursing Home	0	0.0%	0	0.0%	0	0.0%	0	0.0%	0	0.0%
Outside	3	13.6%	3	7.3%	1	2.9%	1	2.9%	1	4.3%
Road/Vehicle	3	13.6%	1	2.4%	1	2.9%	5	14.3%	2	8.7%
Other	0	0.0%	0	0.0%	0	0.0%	1	2.9%	0	0.0%
<b>TOTAL DEATHS</b>	<b>22</b>	<b>100.0%</b>	<b>41</b>	<b>100.0%</b>	<b>35</b>	<b>100.0%</b>	<b>35</b>	<b>100.0%</b>	<b>23</b>	<b>100.0%</b>

AREA OF FIRE ORIGIN	2012		2013		2014		2015		2016	
Kitchen	7	31.8%	10	24.4%	10	28.6%	3	8.6%	0	0.0%
Bedroom	2	9.1%	10	24.4%	8	22.9%	8	22.9%	4	17.4%
Living/Great/Family Room	5	22.7%	10	24.4%	8	22.9%	9	25.7%	9	39.1%
Dining Room	0	0.0%	0	0.0%	2	5.7%	0	0.0%	0	0.0%
Vehicle	3	13.6%	1	2.4%	1	2.9%	5	14.3%	1	4.3%
Outside/yard	2	9.1%	3	7.3%	1	2.9%	0	0.0%	1	4.3%
Bathroom	0	0.0%	0	0.0%	1	2.9%	0	0.0%	0	0.0%
Porch/Deck	0	0.0%	2	4.9%	1	2.9%	1	2.9%	0	0.0%
Basement	0	0.0%	3	7.3%	0	0.0%	2	5.7%	0	0.0%
Victim	3	13.6%	0	0.0%	0	0.0%	3	8.6%	4	17.4%
Garage	0	0.0%	0	0.0%	0	0.0%	0	0.0%	0	0.0%
Hallway/Stairway	0	0.0%	0	0.0%	0	0.0%	0	0.0%	0	0.0%
Other	0	0.0%	2	4.9%	3	8.6%	4	11.4%	4	17.4%
<b>TOTAL FIRE DEATHS</b>	<b>22</b>	<b>100.0%</b>	<b>41</b>	<b>100.0%</b>	<b>35</b>	<b>100.0%</b>	<b>35</b>	<b>100.0%</b>	<b>23</b>	<b>100.0%</b>

SMOKE ALARM STATUS IN FIRES	2012		2013		2014		2015		2016	
Present/Operated	5	31.3%	8	21.6%	7	21.2%	15	42.9%	8	34.8%
Present/Did Not Operate	3	18.8%	3	8.1%	6	18.2%	0	0.0%	2	8.7%
Present/Function Undetermined	1	6.3%	5	13.5%	2	6.1%	8	22.9%	0	0.0%
<b>NO SMOKE ALARM PRESENT</b>	<b>4</b>	<b>25.0%</b>	<b>9</b>	<b>24.3%</b>	<b>9</b>	<b>27.3%</b>	<b>4</b>	<b>11.4%</b>	<b>3</b>	<b>13.0%</b>
Fire Too Small/Non-Structure	0	0.0%	2	5.4%	0	0.0%	6	17.1%	3	13.0%
Undetermined	3	18.8%	10	27.0%	9	27.3%	2	5.7%	7	30.4%
<b>TOTAL FIRE DEATHS</b>	<b>16</b>	<b>100.0%</b>	<b>37</b>	<b>100.0%</b>	<b>33</b>	<b>100.0%</b>	<b>35</b>	<b>100.0%</b>	<b>23</b>	<b>100.0%</b>

Office of the State Fire Marshal

FIRE DEATHS IN MARYLAND

January - June

TIME OF ALARM	2012		2013		2014		2015		2016	
	Number of Deaths	Percent of Total	Number of Deaths	Percent of Total	Number of Deaths	Percent of Total	Number of Deaths	Percent of Total	Number of Deaths	Percent of Total
0001 - 0159	3	13.6%	4	9.8%	5	14.3%	3	8.6%	2	8.7%
0200 - 0359	1	4.5%	4	9.8%	3	8.6%	11	31.4%	6	26.1%
0400 - 0559	1	4.5%	2	4.9%	9	25.7%	7	20.0%	2	8.7%
0600 - 0759	2	9.1%	2	4.9%	0	0.0%	1	2.9%	1	4.3%
0800 - 0959	2	9.1%	4	9.8%	2	5.7%	3	8.6%	0	0.0%
1000 - 1159	1	4.5%	3	7.3%	0	0.0%	1	2.9%	1	4.3%
1200 - 1359	4	18.2%	4	9.8%	2	5.7%	1	2.9%	3	13.0%
1400 - 1559	0	0.0%	2	4.9%	2	5.7%	3	8.6%	1	4.3%
1600 - 1759	1	4.5%	2	4.9%	2	5.7%	0	0.0%	1	4.3%
1800 - 1959	5	22.7%	4	9.8%	1	2.9%	2	5.7%	2	8.7%
2000 - 2159	0	0.0%	0	0.0%	3	8.6%	1	2.9%	2	8.7%
2200 - 2400	2	9.1%	10	24.4%	6	17.1%	2	5.7%	2	8.7%
Unknown	0	0.0%	0	0.0%	0	0.0%	0	0.0%	0	0.0%
<b>TOTAL DEATHS</b>	<b>22</b>	<b>100.0%</b>	<b>41</b>	<b>100.0%</b>	<b>35</b>	<b>100.0%</b>	<b>35</b>	<b>100.0%</b>	<b>23</b>	<b>100.0%</b>

DAY OF WEEK										
Sunday	2	9.1%	10	24.4%	3	8.6%	4	11.4%	3	13.0%
Monday	4	18.2%	2	4.9%	6	17.1%	10	28.6%	3	13.0%
Tuesday	1	4.5%	4	9.8%	2	5.7%	6	17.1%	4	17.4%
Wednesday	6	27.3%	8	19.5%	5	14.3%	2	5.7%	2	8.7%
Thursday	0	0.0%	12	29.3%	7	20.0%	3	8.6%	3	13.0%
Friday	6	27.3%	2	4.9%	5	14.3%	4	11.4%	6	26.1%
Saturday	3	13.6%	3	7.3%	7	20.0%	6	17.1%	2	8.7%

FIRE FATALITIES BY MONTH										
January	7	31.8%	15	36.6%	4	11.4%	9	25.7%	12	52.2%
February	6	27.3%	8	19.5%	4	11.4%	6	17.1%	5	21.7%
March	5	22.7%	8	19.5%	15	42.9%	6	17.1%	2	8.7%
April	2	9.1%	6	14.6%	5	14.3%	4	11.4%	2	8.7%
May	1	4.5%	3	7.3%	4	11.4%	3	8.6%	1	4.3%
June	1	4.5%	1	2.4%	3	8.6%	7	20.0%	1	4.3%

Office of the State Fire Marshal

FIRE DEATHS IN MARYLAND

January - June

COUNTY	2012	2013	2014	2015	2016	5-Year Average	Percent of State Total
Allegany	2	1	1	0	1	1.0	3.2%
Anne Arundel	4	4	1	10	1	4.0	12.8%
Baltimore City	3	10	11	6	5	7.0	22.4%
Baltimore County	3	3	3	5	4	3.6	11.5%
Calvert	0	0	0	1	0	0.2	0.6%
Caroline	0	0	0	0	1	0.2	0.6%
Carroll	0	2	1	0	0	0.6	1.9%
Cecil	0	0	1	1	1	0.6	1.9%
Charles	0	1	0	2	0	0.6	1.9%
Dorchester	1	1	0	0	0	0.4	1.3%
Frederick	0	3	0	0	1	0.8	2.6%
Garrett	0	1	0	0	1	0.4	1.3%
Harford	1	0	0	1	0	0.4	1.3%
Howard	0	1	2	0	1	0.8	2.6%
Kent	0	0	1	0	0	0.2	0.6%
Montgomery	3	2	4	0	1	2.0	6.4%
Prince George's	2	11	2	5	5	5.0	16.0%
Queen Anne's	0	0	1	1	1	0.6	1.9%
St. Mary's	1	0	1	0	0	0.4	1.3%
Somerset	0	0	1	0	0	0.2	0.6%
Talbot	0	1	0	0	0	0.2	0.6%
Washington	2	0	1	0	0	0.6	1.9%
Wicomico	0	0	4	1	0	1.0	3.2%
Worcester	0	0	0	2	0	0.4	1.3%
<b>TOTAL FIRE DEATHS</b>	<b>22</b>	<b>41</b>	<b>35</b>	<b>35</b>	<b>23</b>	<b>31</b>	<b>100.0%</b>

NOTES