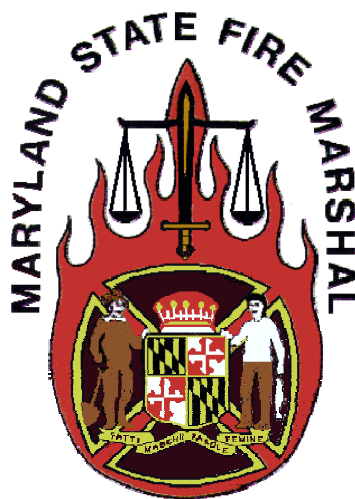


FIRE DEATHS IN MARYLAND



January – December

2011

Prepared: February 2012

STATE OF MARYLAND

OFFICE OF THE STATE FIRE MARSHAL

FIRE DEATHS IN MARYLAND

January – December 2011

During CY 2011, there were 56 fatal fires that resulted in 67 deaths in 14 Maryland counties and Baltimore City. Those deaths represent a 6 percent decrease from the 71 deaths in 50 fires during 2010, but an 8 percent decline from the 73 deaths in 62 fatal fires during 2009.

In Baltimore City, 17 lives were lost in just 13 fatal fires during 2011. Those deaths represent a 15 percent decline from the 20 deaths in 10 fires in 2010, but a dramatic 35 percent drop from the 26 deaths in 22 fires reported in 2009. There were three multiple-death fires in 2011 that claimed seven lives, compared to three multiple-death fires in 2010 in which 13 people died. Five victims died in three fires that are still under investigation for cause, including one fire that claimed two young children and their mother. All but one of the fatal fires were in residential structures.

Ten fires claimed 10 lives in Baltimore County during 2011, compared to 10 deaths in 9 fires in 2010, but a 23 percent decline from the 13 deaths in 11 fires during 2009. During 2011, one life was lost in each of two cooking-related fires, including one apartment building fire in which a 43 year-old volunteer firefighter died of burn injuries sustained while searching for residents of the building. No residents died in that fire, which originated in the kitchen of one of the apartments. Careless smoking claimed three lives in three separate house fires, including two that originated in the bedroom, and one fire that started in the basement area of the home.

In Prince George's County, 16 fire victims died in 12 fires reported during 2011, reflecting a 128 percent increase over the seven people who died in seven fires in 2010, and 45 percent more than the 11 fire victims reported in 2009. In 2011, two fatal residential structure fires, attributed to electrical malfunctions, claimed five lives. Four people died in three fires resulting from vehicle crashes, including one in which an 11 year-old and his two year-old brother died from burn injuries sustained in the fire.

There were five deaths in two fires reported in Allegany County in 2011, compared to two deaths in one fire in 2010. One multiple-death fire claimed the lives of a middle aged couple who died in a living room fire that resulted from an electrical malfunction, while three women died in a residential fire attributed to combustibles too close to space heaters. Montgomery County reported four deaths in as many fires, compared to two deaths in two fires in 2010, and three deaths in 2009. One of the fatalities in 2011 was reported as a suicide by fire, and the causes of the other three fires remain undetermined.

Three fatal fires in Harford County claimed three lives in 2011. Two smoking-related fires resulted in two deaths; one fire originated in the living room and killed a 20 year-old, while a 44 year-old man died as a result of careless smoking in the bedroom of his single-family dwelling. In the third fire, a 91 year-old man died from smoke inhalation and burns in a kitchen fire whose cause has not been determined.

There were also three fatal fires in Queen Anne's County during 2011, compared to no fire deaths in the previous five years. A 91 year-old man died in a bedroom fire resulting from combustibles too close to a space heater. Two intentionally set fires each claimed one life; a 47 year-old man died in a house fire that was determined to be an arson/suicide, while a 42 year-old man was the victim of suicide by fire.

In Frederick County, there were two deaths in separate fires, including one woman who died in a house fire that resulted from unattended cooking in the kitchen, and in another fire, a 57 year-old woman was the victim of suicide by fire.

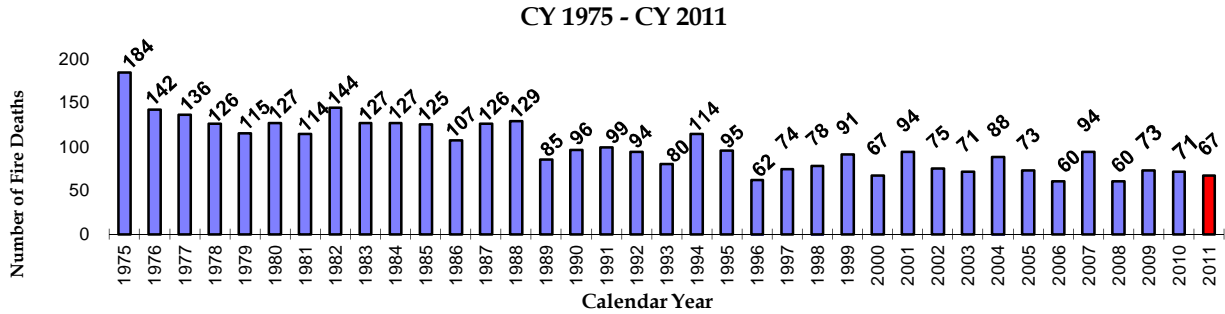
Seven other counties each reported one fire death. Careless smoking was the reported cause of the living room fire that took the life of a middle-aged woman in her home in Anne Arundel County. In Carroll County, an 80 year-old man was the only victim of a fire that originated in the basement of a single-family dwelling. A five year-old boy died in a Charles County house fire that was the reported result of a child playing with matches and a lighter. In Howard County, one man died in a vehicle fire attributed to arson/suicide. An electrical malfunction was the reported cause of a basement fire that claimed the life of an 88 year-old man in Washington County. In Wicomico County, another older man died as the result of thermal injuries sustained in a house fire that occurred three weeks earlier, while a vehicle fire claimed the life of one man in Worcester County.

Nine counties suffered no fire deaths in 2011, including Calvert, Caroline, Cecil, Dorchester, Garrett, Kent, St. Mary's, Somerset, and Talbot.

Following is a summary of the fire deaths reported to the State Fire Marshal during January through December 2011. Also included are summary tables of fire deaths for 2009 through 2011. The numbers of fire deaths in Maryland, by county, for the five-year period 2007 through 2011 are listed on Page 10.

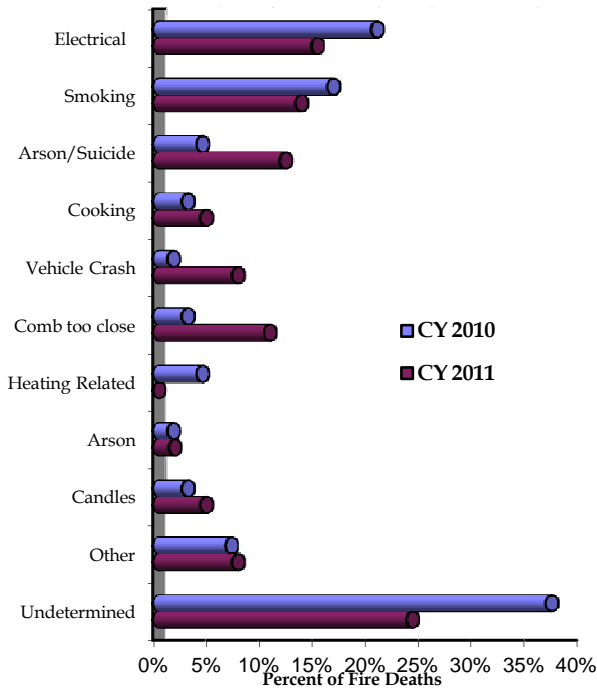
FIRE DEATHS IN MARYLAND

The fire deaths reported in Maryland during 2011 continued to decline from the previous two years. The 67 deaths in 56 fires in 2011 represent a 6 percent decrease from the 71 deaths in 50 fires in 2010, and represent an 8 percent decline from the 73 fire deaths in 62 fires reported in 2009.



In recent years, the numbers of fire fatalities reported to the State Fire Marshal's Office have continued to decline with fire deaths averaging 73 a year from 2007 through 2011. Fire deaths in the State have remained below 100 each year, except one, for the past 20 years, as illustrated in the above graph. During that time, there has been an average of 79 fire deaths a year, while fire fatalities in Maryland averaged 124 a year from 1975 to 1991.

CAUSES OF FATAL FIRES



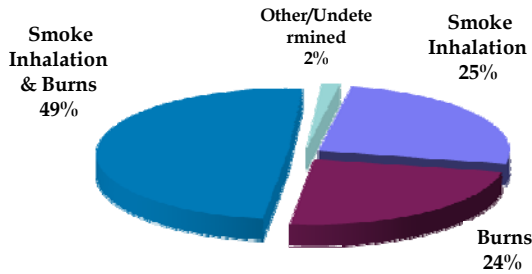
In 2011, as in 2010, fires resulting from electrical malfunctions led to more deaths than fires resulting from other known causes, including careless smoking. Five electrical fires, all in residential structures led to 10 deaths, accounting for 15 percent of all fires deaths, while in 2010, seven fires resulted in 15 deaths and accounted for 21 percent of all deaths. In 2011, nine of those deaths resulted from four multiple-death fires including one electrical fire originating in the living room that claimed the lives of two women and a six year-old boy.

For only the third time in 16 years, fires attributed to careless smoking claimed fewer lives in 2011 than another cause. Nine fire victims, ranging in age from 20 to 77 years, died in nine smoking related fires, all in residential structures. Those deaths accounted for just over 13 percent of all fire deaths in 2011, compared to 2010 when 12 such deaths accounted for 17 percent of all fire deaths that year.

Seven adults died in five fires resulting from combustibles too close to a heat source. Nine fires attributed to arson or arson/suicide claimed as many lives, including four suicide victims. The causes of 14 fires in which 16 lives were lost are not yet determined.

FIRE DEATHS IN MARYLAND

CAUSE OF DEATH OF FIRE VICTIMS

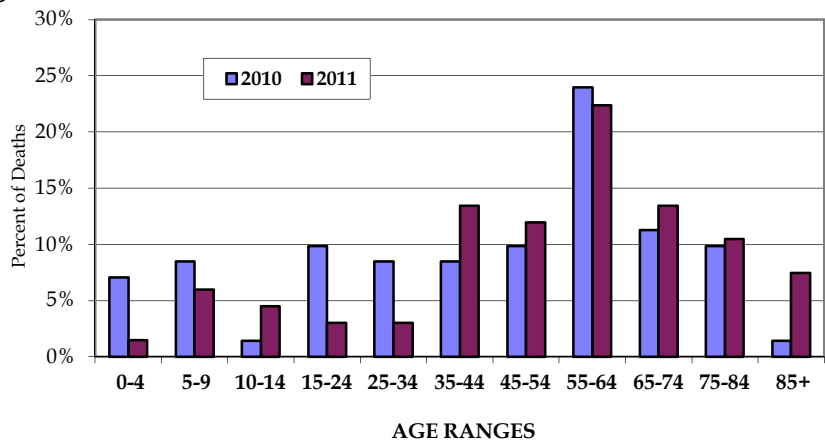


As in most previous years, the combination of smoke inhalation and burns was the cause of death reported most frequently for victims of fatal fires in 2011 claiming 33 lives.

Seventeen victims of fatal fires died as the result of smoke inhalation, and 16 other fire victims succumbed as the result of burn injuries.

AGE OF FIRE DEATH VICTIMS

Eight children died in five fires during 2011. Fire victims younger than 15 years accounted for 12 percent of all fire deaths for the year, a decline from the 12 victims in 2010 who accounted for 17 percent of the deaths, but an increase over the six young victims in 2009 who accounted for six percent of the deaths that year.



Five of the children were the only victims of the fires that killed them. Two brothers, two and 11 years old, were the only victims of a vehicle crash, while two sisters, nine and 13 years old, died in a living room fire caused by an electrical malfunction, and a five year-old boy died in the bedroom fire attributed to a child playing with matches and a lighter. Two boys, seven and 11 years old, died along with their mother in a fire whose cause is under investigation. And a six year-old boy died in an electrical fire that also claimed the lives of two women.

There were four victims in the 15 to 34 years age range in 2011, representing a 54 percent drop from the 13 victims in that age range reported in 2010, and a one-third decline from the nine deaths reported in 2009. Victims in that age range accounted for six percent of the deaths in 2011, compared to 18 percent of the deaths in 2010, and just over 12 percent of the deaths in 2009.

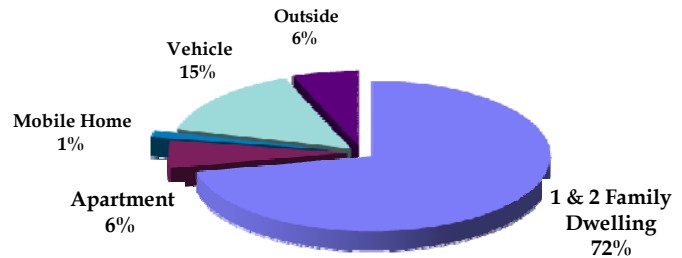
The number of fire death victims in the 35 to 64 years age range increased in 2011 compared to 2010, but declined from 2009. Thirty-two victims in that age range accounted for almost 48 percent of the deaths in 2011, while 30 victims in that age range accounted for just over 42 percent of the fire deaths in 2010, and 36 victims accounted for 49 percent of the deaths in 2009. Half of the 10 victims of fatal fires in Baltimore County fell in this age range, as did half of the 16 fire death victims reported in Prince George's County in 2011.

The 21 fire death victims 65 and older represent a 31 percent increase in the number of deaths compared to the 16 such victims in 2010, but equal to the number reported in 2009. Those victims 65 years and older accounted for 31 percent of the fire deaths in 2011, compared to 23 percent of the fire deaths during the 2010, and 29 percent of the fire deaths in 2009.

FIRE DEATHS IN MARYLAND

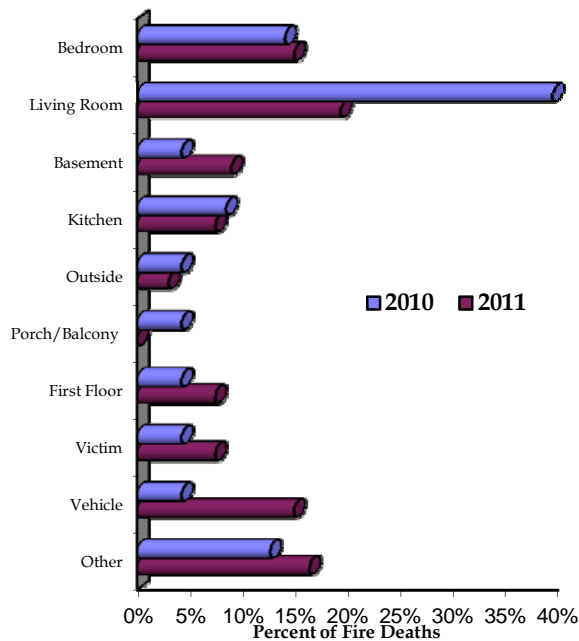
LOCATION OF FATAL FIRES

In 2011, as in other years, most fire deaths occurred in residential structures, including 48 deaths in one and two family dwellings, four victims of apartment fires, and one victim of a mobile home fire. Residential fires accounted for 79 percent of the fire deaths in 2011, compared to 86 percent in 2010, and 77 percent in 2009.



Ten vehicle-related fire deaths included three adults and two young children who died in four vehicle crashes, and two victims of arson/suicide. The four fire deaths in the Outside category included two victims of suicide by fire.

AREA OF FIRE ORIGIN



Thirteen deaths resulted from seven fires that started in the living room or family room area of the home in 2011, compared to 28 such deaths in 14 fires in 2010, and 12 deaths in 11 fires in 2009. Four multiple-death living room fires claimed 10 lives, including seven victims of three fires that resulted from electrical malfunctions in 2011.

Ten victims died in 10 fires that originated in the bedroom during 2011, as well as, in 2010, while 19 victims died in 15 such fires in 2009. Careless smoking resulted in five bedroom fires that claimed the lives of five adults, and two people died in separate fires that resulted from combustibles too close to space heaters in the bedroom.

During 2011, five fires that originated in the kitchen area resulted in as many deaths, compared to five deaths in six fires in 2010. Cooking-related fires accounted for three of the kitchen fire deaths.

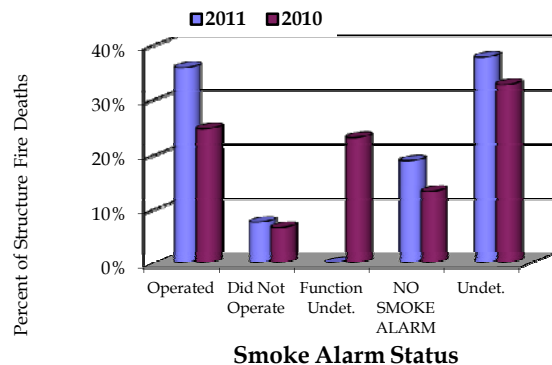
The basement was the reported area of origin for six fires that claimed six lives, compared to 2010 when two basement fires resulted in the loss of three lives. In 2011, one man died in a house fire he set intentionally, while an electrical fire claimed an 88 year-old man, and one man died in another basement fire caused by the careless use of incense.

SMOKE ALARM PERFORMANCE

Fourteen fatal residential structure fires occurred where the smoke alarms were known to function properly, but the fires still claimed the lives of 19 individuals.

There were no smoke alarms present in seven fatal structure fires that killed 10 Maryland residents in 2011, including one fire in which three woman died.

Another four people died in separate structure fires where the smoke alarms were present, but did not operate.

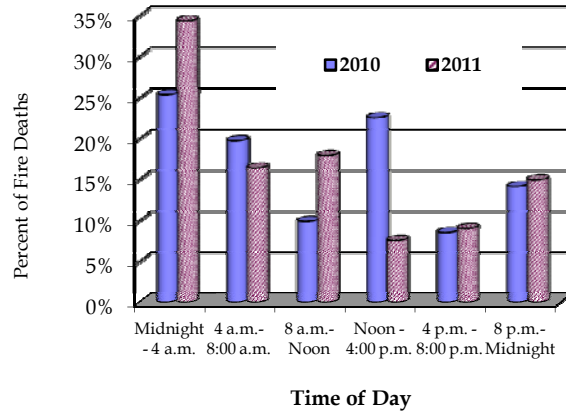


FIRE DEATHS IN MARYLAND

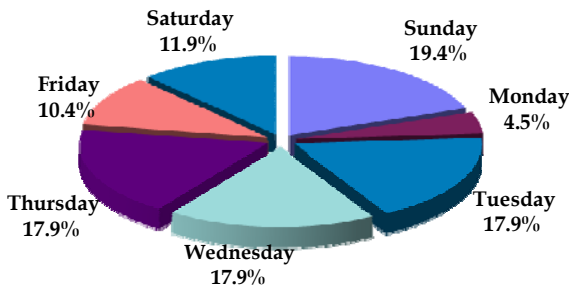
TIME OF FATAL FIRES

Consistent with most previous years, more fire deaths occurred in the late night and early morning hours than at other times of the day, and the hours between 10 p.m. and 6 a.m. proved to be the most deadly eight-hour period in 2011.

The 27 fatal fires that started during those eight hours resulted in 35 deaths accounting for 62 percent of the 67 fire deaths for the year, similar to 2010 when 30 fatal fires lead to 39 deaths accounting for 55 percent of the 71 fire deaths that year. Five of the eight multiple-death fires occurred during those hours in 2011.



DAY OF WEEK OF FATAL FIRES



Fatal fires have been more likely to occur over the weekend. However, Tuesday, Wednesday and Thursday proved to be more deadly than the weekend in 2011.

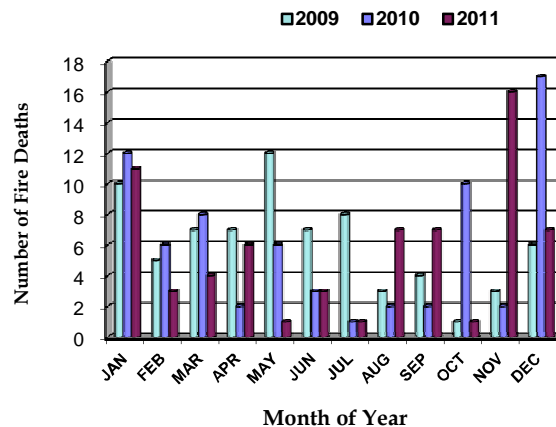
Over 55 percent of the fatal fires occurred during those three days, which resulted in over 54 percent of the 67 fire deaths for the year.

Thirty-six people died from 31 fires that started on those days, including seven of the 10 deaths in electrical fires.

MONTH OF YEAR

The winter months have often been the busiest months for fatal fires, and this proved true for 2011. More than half of the fire deaths resulted from fires that occurred in November, December and January when 26 fires claimed 34 lives.

As illustrated in the adjacent graph, November was the deadliest, with 16 deaths in 11 fires, including nine people who died in just four of those fires. Almost one-fourth of all fire deaths for the year occurred during that month.



Office of the State Fire Marshal
FIRE DEATHS IN MARYLAND
 CY 2011

COUNTY	FIRE CAUSE													FIRE DEATHS		FATAL FIRES	
	Smoking	Electrical	Mech. Failure	Unattended Candle/Incense	Cooking	Arson/Homicide	Suicide/Ars on-Suicide	Open Flame	Flamm. Liq/Vapors	Combust. too close	Vehicle Crash	Child Play	Under Invest/Undet.	Total Deaths	Percent of Total	Total Fires	Percent of Total
Allegany	0	2	0	0	0	0	0	0	0	3	0	0	0	5	7.5%	2	3.6%
Anne Arundel	1	0	0	0	0	0	0	0	0	0	0	0	0	1	1.5%	1	1.8%
Baltimore City	2	2	1	3	0	1	0	1	0	2	0	0	5	17	25.4%	13	23.2%
Baltimore County	3	0	0	0	2	0	1	0	0	0	1	0	3	10	14.9%	10	17.9%
Calvert	0	0	0	0	0	0	0	0	0	0	0	0	0	0	0.0%	0	0.0%
Caroline	0	0	0	0	0	0	0	0	0	0	0	0	0	0	0.0%	0	0.0%
Carroll	0	0	0	0	0	0	0	0	0	0	0	0	1	1	1.5%	1	1.8%
Cecil	0	0	0	0	0	0	0	0	0	0	0	0	0	0	0.0%	0	0.0%
Charles	0	0	0	0	0	0	0	0	0	0	0	1	0	1	1.5%	1	1.8%
Dorchester	0	0	0	0	0	0	0	0	0	0	0	0	0	0	0.0%	0	0.0%
Frederick	0	0	0	0	1	0	1	0	0	0	0	0	0	2	3.0%	2	3.6%
Garrett	0	0	0	0	0	0	0	0	0	0	0	0	0	0	0.0%	0	0.0%
Harford	2	0	0	0	0	0	0	0	0	0	0	0	1	3	4.5%	3	5.4%
Howard	0	0	0	0	0	0	1	0	0	0	0	0	0	1	1.5%	1	1.8%
Kent	0	0	0	0	0	0	0	0	0	0	0	0	0	0	0.0%	0	0.0%
Montgomery	0	0	0	0	0	0	1	0	0	0	0	0	3	4	6.0%	4	7.1%
Prince George's	1	5	0	0	0	0	2	1	1	1	4	0	1	16	23.9%	12	21.4%
Queen Anne's	0	0	0	0	0	0	2	0	0	1	0	0	0	3	4.5%	3	5.4%
St. Mary's	0	0	0	0	0	0	0	0	0	0	0	0	0	0	0.0%	0	0.0%
Somerset	0	0	0	0	0	0	0	0	0	0	0	0	0	0	0.0%	0	0.0%
Talbot	0	0	0	0	0	0	0	0	0	0	0	0	0	0	0.0%	0	0.0%
Washington	0	1	0	0	0	0	0	0	0	0	0	0	0	1	1.5%	1	1.8%
Wicomico	0	0	0	0	0	0	0	0	0	0	0	0	1	1	1.5%	1	1.8%
Worcester	0	0	0	0	0	0	0	0	0	0	0	0	1	1	1.5%	1	1.8%
TOTAL FIRE DEATHS	9	10	1	3	3	1	8	2	1	7	5	1	16	67	100%	56	100%
Column % of All Fire Death	13%	15%	1%	4%	4%	1%	12%	3%	1%	10%	7%	1%	24%				
TOTAL FATAL FIRES	9	5	1	2	3	1	8	2	1	5	4	1	14				
Column % of All Fatal Fires	16%	9%	2%	4%	5%	2%	14%	4%	2%	9%	7%	2%	25%				

Office of the State Fire Marshal
FATAL FIRES IN MARYLAND
CY 2011

COUNTY	FIRE CAUSE													FATAL FIRES		FIRE DEATHS	
	Smoking	Electrical	Mech. Failure	Unattended Candle/ Incense	Cooking	Arson/ Homicide	Suicide/Arson Suicide	Open Flame	Flamm. Liq/Vapors	Combust. too close	Vehicle Crash	Child Play	Under Invest/ Undet.	Total Fires	Percent of Total	Total Deaths	Percent of Total
Allegany	0	1	0	0	0	0	0	0	0	1	0	0	0	2	3.6%	5	7.5%
Anne Arundel	1	0	0	0	0	0	0	0	0	0	0	0	0	1	1.8%	1	1.5%
Baltimore City	2	1	1	2	0	1	0	1	0	2	0	0	3	13	23.2%	17	25.4%
Baltimore County	3	0	0	0	2	0	1	0	0	0	1	0	3	10	17.9%	10	14.9%
Calvert	0	0	0	0	0	0	0	0	0	0	0	0	0	0	0.0%	0	0.0%
Caroline	0	0	0	0	0	0	0	0	0	0	0	0	0	0	0.0%	0	0.0%
Carroll	0	0	0	0	0	0	0	0	0	0	0	0	1	1	1.8%	1	1.5%
Cecil	0	0	0	0	0	0	0	0	0	0	0	0	0	0	0.0%	0	0.0%
Charles	0	0	0	0	0	0	0	0	0	0	0	1	0	1	1.8%	1	1.5%
Dorchester	0	0	0	0	0	0	0	0	0	0	0	0	0	0	0.0%	0	0.0%
Frederick	0	0	0	0	1	0	1	0	0	0	0	0	0	2	3.6%	2	3.0%
Garrett	0	0	0	0	0	0	0	0	0	0	0	0	0	0	0.0%	0	0.0%
Harford	2	0	0	0	0	0	0	0	0	0	0	0	1	3	5.4%	3	4.5%
Howard	0	0	0	0	0	0	1	0	0	0	0	0	0	1	1.8%	1	1.5%
Kent	0	0	0	0	0	0	0	0	0	0	0	0	0	0	0.0%	0	0.0%
Montgomery	0	0	0	0	0	0	1	0	0	0	0	0	3	4	7.1%	4	6.0%
Prince George's	1	2	0	0	0	0	2	1	1	1	3	0	1	12	21.4%	16	23.9%
Queen Anne's	0	0	0	0	0	0	2	0	0	1	0	0	0	3	5.4%	3	4.5%
St. Mary's	0	0	0	0	0	0	0	0	0	0	0	0	0	0	0.0%	0	0.0%
Somerset	0	0	0	0	0	0	0	0	0	0	0	0	0	0	0.0%	0	0.0%
Talbot	0	0	0	0	0	0	0	0	0	0	0	0	0	0	0.0%	0	0.0%
Washington	0	1	0	0	0	0	0	0	0	0	0	0	0	1	1.8%	1	1.5%
Wicomico	0	0	0	0	0	0	0	0	0	0	0	0	1	1	1.8%	1	1.5%
Worcester	0	0	0	0	0	0	0	0	0	0	0	0	1	1	1.8%	1	1.5%
TOTAL FATAL FIRE	9	5	1	2	3	1	8	2	1	5	4	1	14	56	100%	67	100%
Column % of Total	16%	9%	2%	4%	5%	2%	14%	4%	2%	9%	7%	2%	25%				

Office of the State Fire Marshal

FIRE DEATHS IN MARYLAND

FIRE CAUSE	CY 2009		CY 2010		CY 2011	
	Number of Deaths	Percent of Total	Number of Deaths	Percent of Total	Number of Deaths	Percent of Total
Smoking Related	18	24.7%	12	16.9%	9	13.4%
Electrical Malfunction	7	9.6%	15	21.1%	10	14.9%
Combustibles too close	1	1.4%	2	2.8%	7	10.4%
Vehicle Crash	6	8.2%	1	1.4%	5	7.5%
Cooking Related	5	6.8%	2	2.8%	3	4.5%
Heating Related	2	2.7%	3	4.2%	0	0.0%
Arson/Arson Homicide	3	4.1%	1	1.4%	1	1.5%
Open Flame	0	0.0%	0	0.0%	2	3.0%
Flammable Liquid/Vapors	0	0.0%	1	1.4%	1	1.5%
Candles/Incense	3	4.1%	2	2.8%	3	4.5%
Suicide/Arson Suicide	5	6.8%	3	4.2%	8	11.9%
Child Playing	1	1.4%	0	0.0%	1	1.5%
Equipmnt/applnce Malf	2	2.7%	0	0.0%	0	0.0%
Other	0	0.0%	2	2.8%	1	1.5%
Undetermined	20	27.4%	27	38.0%	16	23.9%
TOTAL DEATHS	73	100.0%	71	100.0%	67	100.0%
*Heating Includes:						
Kerosene Heater	0		0		0	
Space/Bsbrd Heater	2		0		0	
Furnace	0		0		0	
Faulty Chimney/Flue	0		2		0	

DEATH CAUSE						
Smoke Inhalation & Burns	32	43.8%	29	40.8%	33	49.3%
Smoke Inhalation	25	34.2%	24	33.8%	17	25.4%
Burns	12	16.4%	14	19.7%	16	23.9%
Other	4	5.5%	4	5.6%	1	1.5%

SEX OF VICTIM						
Male	44	60.3%	39	54.9%	41	61.2%
Female	29	39.7%	32	45.1%	26	38.8%

AGE OF VICTIM						
0 - 4	0	0.0%	5	7.0%	1	1.5%
5 - 9	3	4.1%	6	8.5%	4	6.0%
10 - 14	3	4.1%	1	1.4%	3	4.5%
15 - 24	5	6.8%	7	9.9%	2	3.0%
25 - 34	4	5.5%	6	8.5%	2	3.0%
35 - 44	7	9.6%	6	8.5%	9	13.4%
45 - 54	16	21.9%	7	9.9%	8	11.9%
55 - 64	13	17.8%	17	23.9%	15	22.4%
65 - 74	7	9.6%	8	11.3%	9	13.4%
75 - 84	9	12.3%	7	9.9%	7	10.4%
85 +	5	6.8%	1	1.4%	5	7.5%
Unknown	1	1.4%	0	0.0%	2	3.0%

Office of the State Fire Marshal

FIRE DEATHS IN MARYLAND

LOCATION OF FIRE	CY 2009		CY 2010		CY 2011	
	Number of Deaths	Percent of Total	Number of Deaths	Percent of Total	Number of Deaths	Percent of Total
Home	48	65.8%	49	69.0%	48	71.6%
Apartment	7	9.6%	8	11.3%	4	6.0%
Mobile Home/Trailer	0	0.0%	4	5.6%	1	1.5%
Outside	4	5.5%	6	8.5%	4	6.0%
Vehicle	13	17.8%	2	2.8%	10	14.9%
Hotel/Rmng House/Nursng Home	1	1.4%	0	0.0%	0	0.0%
Store/Warehouse/Manufact/Garag	0	0.0%	2	2.8%	0	0.0%
TOTAL DEATHS	73	100.0%	71	100.0%	67	100.0%

AREA OF FIRE ORIGIN						
Living Room	11	15.1%	28	39.4%	13	19.4%
Bedroom	19	26.0%	10	14.1%	10	14.9%
Kitchen	7	9.6%	6	8.5%	5	7.5%
Vehicle	13	17.8%	3	4.2%	10	14.9%
Outside/Yard	2	2.7%	3	4.2%	2	3.0%
Family Room/Den	1	1.4%	0	0.0%	0	0.0%
Porch/Balcony/Deck	4	5.5%	3	4.2%	0	0.0%
Bathroom	0	0.0%	2	2.8%	1	1.5%
Basement/Utility Room	11	15.1%	3	4.2%	6	9.0%
Hallway/Entrance/Foyer/Stairway	0	0.0%	0	0.0%	1	1.5%
Victim	0	0.0%	2	2.8%	5	7.5%
1st Floor	0	0.0%	3	4.2%	5	7.5%
Dining Room	0	0.0%	1	1.4%	0	0.0%
Other/Under Inv	5	6.8%	7	9.9%	9	13.4%

SMOKE ALARM STATUS IN STRUCTURE FIRES						
Present/Operated	19	33.9%	15	24.6%	19	35.8%
Present/Did Not Operate	2	3.6%	4	6.6%	4	7.5%
Present/Function Undetermined	11	19.6%	14	23.0%	0	0.0%
NO ALARM PRESENT	11	19.6%	8	13.1%	10	18.9%
Undetermined	13	23.2%	20	32.8%	20	37.7%
TOTAL STRUCTURE FIRE DEATHS	56	100.0%	61	100.0%	53	100.0%

Office of the State Fire Marshal

FIRE DEATHS IN MARYLAND

TIME OF ALARM	CY 2009		CY 2010		CY 2011	
	Number of Deaths	Percent of Total	Number of Deaths	Percent of Total	Number of Deaths	Percent of Total
0001 - 0159	8	11.0%	10	14.1%	8	11.9%
0200 - 0359	11	15.1%	8	11.3%	15	22.4%
0400 - 0559	8	11.0%	13	18.3%	7	10.4%
0600 - 0759	3	4.1%	1	1.4%	4	6.0%
0800 - 0959	3	4.1%	4	5.6%	8	11.9%
1000 - 1159	2	2.7%	3	4.2%	4	6.0%
1200 - 1359	5	6.8%	6	8.5%	2	3.0%
1400 - 1559	3	4.1%	10	14.1%	3	4.5%
1600 - 1759	5	6.8%	3	4.2%	5	7.5%
1800 - 1959	3	4.1%	3	4.2%	1	1.5%
2000 - 2159	10	13.7%	2	2.8%	5	7.5%
2200 - 2400	12	16.4%	8	11.3%	5	7.5%
TOTAL DEATHS	73	100.0%	71	100.0%	67	100.0%

DAY OF WEEK	CY 2009		CY 2010		CY 2011	
Sunday	13	17.8%	11	15.5%	13	19.4%
Monday	8	11.0%	7	9.9%	3	4.5%
Tuesday	8	11.0%	11	15.5%	12	17.9%
Wednesday	10	13.7%	9	12.7%	12	17.9%
Thursday	3	4.1%	7	9.9%	12	17.9%
Friday	15	20.5%	9	12.7%	7	10.4%
Saturday	16	21.9%	17	23.9%	8	11.9%

FIRE FATALITIES BY MONTH	CY 2009		CY 2010		CY 2011	
January	10	13.7%	12	16.9%	11	16.4%
February	5	6.8%	6	8.5%	3	4.5%
March	7	9.6%	8	11.3%	4	6.0%
April	7	9.6%	2	2.8%	6	9.0%
May	12	16.4%	6	8.5%	1	1.5%
June	7	9.6%	3	4.2%	3	4.5%
July	8	11.0%	1	1.4%	1	1.5%
August	3	4.1%	2	2.8%	7	10.4%
September	4	5.5%	2	2.8%	7	10.4%
October	1	1.4%	10	14.1%	1	1.5%
November	3	4.1%	2	2.8%	16	23.9%
December	6	8.2%	17	23.9%	7	10.4%

Office of the State Fire Marshal

FIRE DEATHS IN MARYLAND

COUNTY	CY 2007	CY 2008	CY 2009	CY 2010	CY 2011	5-Year Average	Percent of State Total	FIRE DEATH RATE*
Allegany	2	0	0	2	5	1.8	2.5%	2.4
Anne Arundel	5	4	1	6	1	3.4	4.7%	0.6
Baltimore City	33	19	26	20	17	23.0	31.5%	3.7
Baltimore County	6	8	13	10	10	9.4	12.9%	1.2
Calvert	0	1	0	2	0	0.6	0.8%	0.7
Caroline	0	0	0	0	0	0.0	0.0%	0.0
Carroll	0	2	1	0	1	0.8	1.1%	0.5
Cecil	2	1	2	7	0	2.4	3.3%	2.4
Charles	1	3	2	1	1	1.6	2.2%	1.1
Dorchester	0	2	0	0	0	0.4	0.5%	1.2
Frederick	1	2	4	2	2	2.2	3.0%	0.9
Garrett	0	0	0	1	0	0.2	0.3%	0.7
Harford	9	1	0	3	3	3.2	4.4%	1.3
Howard	3	0	1	3	1	1.6	2.2%	0.6
Kent	1	0	1	2	0	0.8	1.1%	4.0
Montgomery	13	9	3	2	4	6.2	8.5%	0.6
Prince George's	6	5	11	7	16	9.0	12.3%	1.0
Queen Anne's	0	0	0	0	3	0.6	0.8%	1.3
St. Mary's	0	0	2	1	0	0.6	0.8%	0.6
Somerset	0	2	0	1	0	0.6	0.8%	2.3
Talbot	3	0	1	1	0	1.0	1.4%	2.6
Washington	0	0	5	0	1	1.2	1.6%	0.8
Wicomico	4	1	0	0	1	1.2	1.6%	1.2
Worcester	5	0	0	0	1	1.2	1.6%	2.3
TOTAL FIRE DEATHS	94	60	73	71	67	73	100.0%	1.3

FIRE DEATH RATE** 1.7 1.1 1.3 1.2 1.2

*DEATH RATE: Number of civilian fire deaths per 100,000 population

** 2007 and 2008 rates are based on 2008 census estimates

** 2009 thru 2011 rates are based on the 2010 U.S. census

NOTES