

MARYLAND FIRE DEATH SUMMARY REPORT



CY 2004

Prepared: February 2005

STATE OF MARYLAND

OFFICE OF THE STATE FIRE MARSHAL

FIRE DEATHS IN MARYLAND

January – December 2004

During CY 2004, there were 68 fatal fires that resulted in 87 deaths in 13 Maryland counties and Baltimore City. Those deaths represent a 23 percent increase over the 71 fire deaths in 2003, and a 16 percent increase over the 75 fire deaths reported during 2002.

The 29 fire deaths in 21 fatal fires reported by Baltimore City is just one fire and one more fire death than the 28 deaths in 20 fires reported in 2003, and are the most fire fatalities reported in the City since 1998. There were seven (7) multiple-death fires that killed 16 people. One cooking related fire killed three (3) people, as did one smoking related fire, while two people died in each of five (5) other fires.

Two (2) fires attributed to unattended candles resulted in three (3) deaths, and two fires attributed to children playing cost the lives of one infant and an elderly man. There were four (4) fatal apartment fires, 14 fatal fires in single-family dwellings, one fatal vehicle fire, and one fatal fire that occurred in a park

Baltimore County reported six (6) deaths resulting from five (5) fires during 2004, three less than the 9 deaths in 2003, and five less than the 11 deaths reported in 2002. Three adults died in two single family dwelling fires, one woman died in an apartment fire, and one man died in a vehicle fire. The exact cause of two fatal fires is still under investigation.

Nineteen (19) fire victims died in 16 fires reported in Prince George's County during 2004, which is a dramatic increase over the seven (7) fire deaths reported in 2003, and almost double the 11 fire deaths in 2002. Nine (9) fires in single-family dwellings took 13 lives, and two people died in separate fatal apartment fires. Three men died in separate vehicle fires, and one person set herself on fire in a parking lot.

Twelve (12) lives were lost in nine (9) fires in Anne Arundel County, including one dwelling fire in which two grandparents and their two young grandchildren died. Four adults died in separate fires that were attributed to careless smoking.

Montgomery County reported four (4) deaths in three fires, including two people who died in one residential structure fire, the exact cause of which has not been reported. The other dwelling fire was the result of misuse of a flammable liquid. There were four (4) fire fatalities in Howard County, three of which were vehicle fire deaths. These were the first fire deaths in the county since 2000.

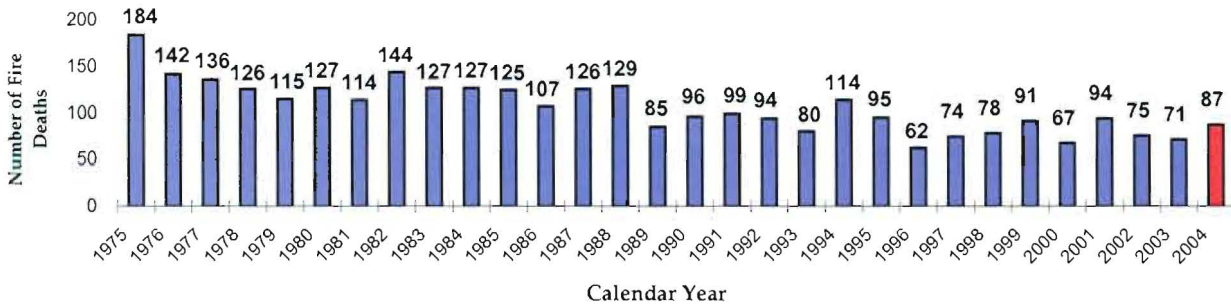
Three (3) fires in Washington County resulted in three deaths during 2004, which is two less than the five (5) deaths reported in 2003. Caroline, Dorchester, and Harford counties each reported two fire deaths, while Carroll, Frederick, and Wicomico each reported one fire death during the year.

Following is a summary of the fire deaths reported to the State Fire Marshal during January through December 2004. Also included are summary tables of fire deaths for 2002 through 2004. The numbers of fire deaths in Maryland, by county, for the five-year period 2000 through 2004 are listed on Page 10.

FIRE DEATHS IN MARYLAND

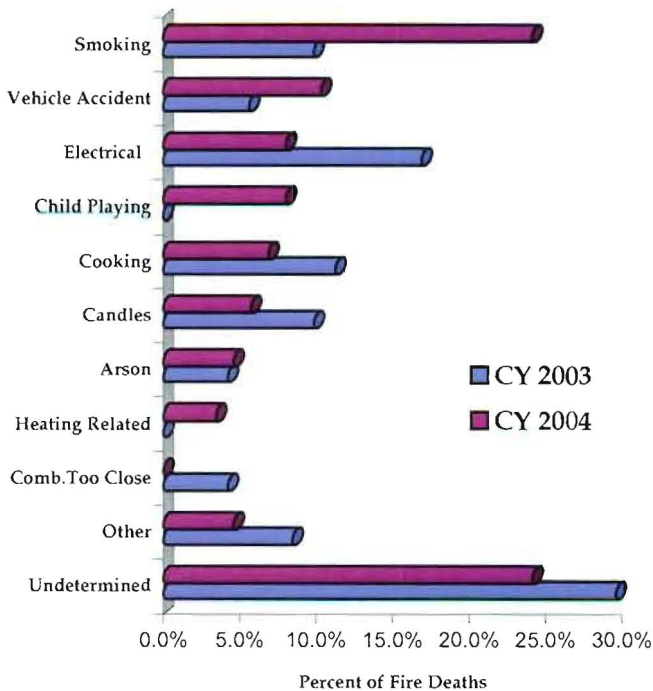
Eighty-seven people died in Maryland during CY 2004 as the result of 68 fatal fires. Those deaths represent a 23 percent increase over the 71 fire deaths in 57 fires reported in 2003, a 16 percent increase over the 75 fire deaths reported in 2002, but a 7 percent decline from the 94 deaths in 2001.

CY 1975 - CY 2004



The numbers of fire deaths over the past five (5) years represent the fewest fatalities reported to the State Fire Marshal's Office in the last 29 years: fire deaths averaged less than 79 a year from 2000 through 2004. As illustrated in the above graph, fire deaths in the State have remained below 100 each year, except one, for the past 16 years. During that time, there has been an average of 85 fire deaths a year, while fire fatalities in Maryland averaged 130 a year from 1975 to 1988.

CAUSES OF FATAL FIRES



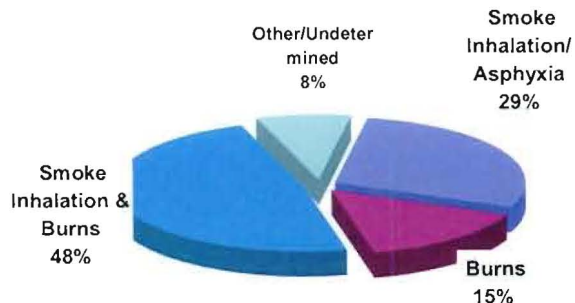
Smoking-related fire deaths increased significantly in 2004 after declining in 2003. Fatal fires that resulted from careless smoking led to more fire deaths than fires resulting from other causes. Twenty-one (21) fire victims, ranging in age from 5 to 92 years, died in 16 smoking-related fires, all of which were in residential structures. This reflects a dramatic 200 percent increase over the seven (7) deaths in six (6) smoking-related fires reported in 2003, and a significant increase over the more usual 15 fire-death victims of careless smoking fires reported in 2002. Fatal smoking-related fires were not confined to one area of the home in 2004, when nine (9) victims died as the result of such fires that started in the living room, five (5) in the bedroom, five in the basement, and two (2) in fires that originated in the bathroom.

Four (4) fires resulting from children playing with matches or other heat sources killed seven (7) victims, including three children, one of whom was less than a year old. There were no child playing fire deaths reported in 2003.

Three (3) cooking-related kitchen fires in residential dwellings claimed six (6) lives in 2004, including one fire that killed three children less than 7 years old.

FIRE DEATHS IN MARYLAND

CAUSE OF DEATH OF FIRE VICTIMS



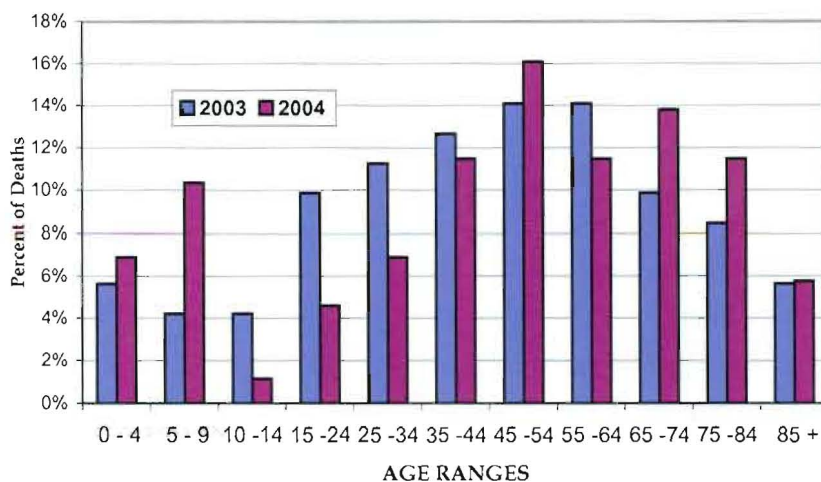
Unlike previous years, for almost half of the fire death victims in 2004 the cause of death was reported as the combination of smoke inhalation and burns, claiming 42 lives.

Smoke inhalation, which is usually the most frequent cause of fire death, was the primary cause of death reported for 25 victims of the 87 fire fatalities in 2004. Thirteen (13) fire fatalities succumbed as the result of burn injuries.

AGE OF FIRE DEATH VICTIMS

Sixteen (16) children died in 10 fires during 2004. Fire victims younger than 15 years accounted for over 18 percent of all fire deaths for the year, compared to 10 young victims who accounted for just 14 percent of the fire death victims during 2003.

In 2004, five (5) multiple-death fires claimed the lives of 11 children, including three young victims who perished in a fire attributed to unattended cooking. Seven (7) children died in five (5) fires which are still under investigation. Three (3) young victims were killed in two residential fires attributed to careless smoking, and two fires attributed to child playing with the heat source also claimed three children.



There were 10 fire death victims in the 15 to 34 years age range in 2004, compared to 15 such victims reported in 2003. Victims in that age range accounted for 11.5 percent of the deaths in 2004, compared to 21 percent of the fire deaths in 2003. Three (3) of the 7 victims of electrical fires fell in this age range, as did three (3) of the nine 9 victims of vehicle accident fires.

The number of fire death victims in the 35 to 64 years age range rose in 2004 compared to 2003, but accounted for a relatively smaller proportion of total fire deaths. Thirty-four (34) victims in that age range accounted for 39 percent of the fire deaths in 2004, compared to 29 victims who represented 41 percent of the fire fatalities in 2003. Eight (8) of the victims of fires caused by careless smoking fell in this age range, as did three (3) of the victims of electrical malfunction fires, and five (5) of the victims of vehicle accident fires.

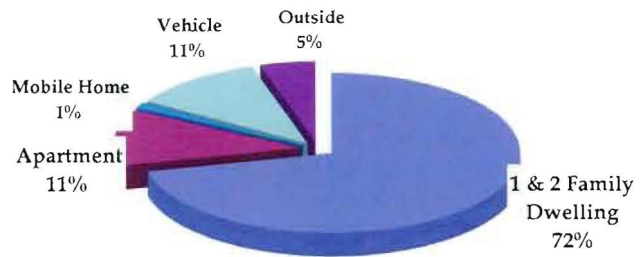
Those victims 65 years and older accounted for 31 percent of the fire deaths during the year, compared to 24 percent of the fire deaths in 2003. The 27 elderly victims of fatal fires in 2004 represent a significant 59 percent increase over the 17 deaths among the elderly during 2003. In 2004, smoking-related fires claimed nine (9) older victims, and all three (3) of the heating-related fire victims were over 65 years old.

FIRE DEATHS IN MARYLAND

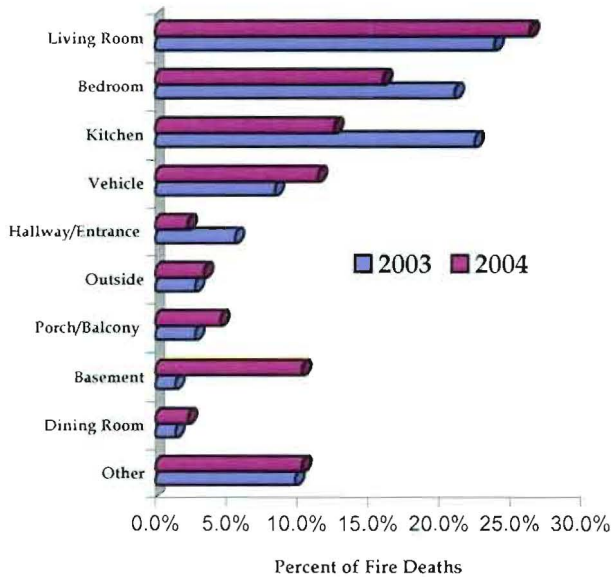
LOCATION OF FATAL FIRES

In 2004, as in other years, most fire deaths occurred in residential structures. Almost 84 percent of the fire deaths were the result of residential fires, including 62 deaths in one and two family dwellings, 10 victims of apartment fires, and one person who died in a smoking-related mobile home fire.

The Four (4) fire deaths in the Outside category include two people who were suicide victims, including one women set herself on fire in a parking lot.



AREA OF FIRE ORIGIN



Twenty-three (23) victims died in 16 fires that started in the living room or family room area of the home in 2004, a 40 percent increase over the 15 such deaths in 2003. Eight (8) people died in seven (7) fires caused by careless smoking, while two fires resulting from unattended candles killed three victims. Three (3) living room fires still under investigation killed four (4) people.

Fourteen (14) deaths resulted from 14 fires that originated in the bedroom during 2004. Careless smoking resulted in fires in the bedroom that claimed the lives of seven (7) adults. Child playing fires resulted in the loss of two lives, and five (5) fatal bedroom fires are still under investigation.

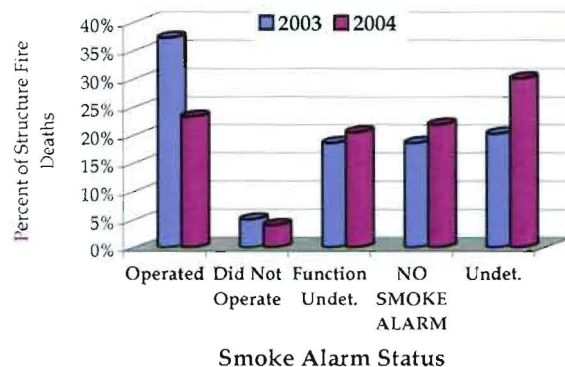
Eleven (11) people died in 7 fires that originated in the kitchen area during 2004, a significant drop from the 16 such fires in 2003. Two (2) cooking-related fires resulted in five fire deaths in 2004, while three victims died in two electrical fires that started in the kitchen.

SMOKE ALARM PERFORMANCE

Sixteen (16) fatal residential structure fires occurred where the smoke alarm was known to function properly, but the fires still claimed the lives of 17 individuals.

There were no smoke alarms present in 10 fatal structure fires that killed 16 Maryland residents in 2004. Those deaths represent a 45 percent increase over the 11 such deaths reported in the previous year.

Another 15 people died in 11 structure fires where the smoke alarms were present, but whether or not they operated was not determined.

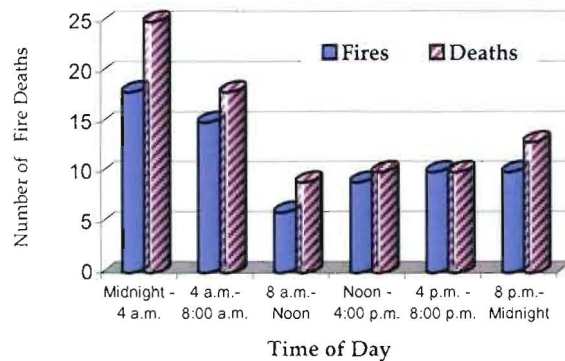


FIRE DEATHS IN MARYLAND

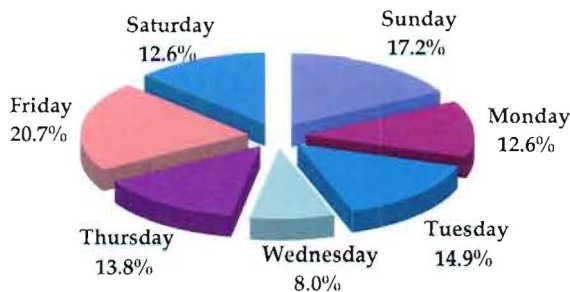
TIME OF FATAL FIRES

The late night and early morning hours continued to prove deadly during CY 2004. Fires that started between the hours of 12 midnight and 8 a.m. resulted in almost 52 percent of the 87 fire deaths in 2004, compared to just over 52 percent of the 71 fire deaths in 2003.

Forty-five (45) victims died in 33 fatal fires during this time, including nine (9) multiple-death fires. Seven (7) of the 16 smoking related fires occurred during this time period killing 9 adults and one child.



DAY OF WEEK OF FATAL FIRES



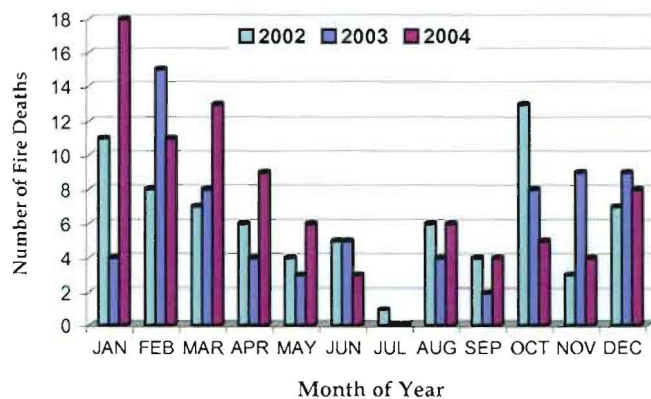
Fatal fires have been more likely to occur over the weekend, and those days were especially deadly in 2004.

Almost 52 percent of the fatal fires occurred during the three-day weekend period Friday, Saturday and Sunday, which resulted in almost 51 percent of the fire deaths for the year. Forty-four (44) people died from 33 fires that started on the weekend, including seven multiple-death fires that killed 16 victims. One early morning smoking-related fire claimed three lives on a Saturday, and a Sunday morning cooking fire killed three children.

MONTH OF YEAR

The first three months of the year have often been the busiest months for fatal fires, and 2004 proved to be no exception, as illustrated in the adjacent graph.

Almost half (42) of the 87 fire fatalities resulted from the 30 fires during January, February and March of 2004. Three of the four (4) unattended candle fires occurred during those months, resulting in four deaths. The three heating-related fires and deaths occurred during the last three months of the year.



Office of the State Fire Marshal

FIRE DEATHS IN MARYLAND
CY 2004

COUNTY	FIRE CAUSE												FIRE DEATHS		FATAL FIRES	
	Smoking	Electrical	Candles	Child Play	Cooking	Arson	Suicide	Heating Related	Open/Unattended Fire	Vehicle Accident	Other	Under Invest/Undetermined	Total Deaths	Percent of Total	Total Fires	Percent of Total
Allegany	0	0	0	0	0	0	0	0	0	0	0	0	0	0.0%	0	0.0%
Anne Arundel	4	1	0	4	0	0	0	0	0	0	0	3	12	13.8%	9	13.2%
Baltimore City	4	2	3	2	4	3	0	0	1	1	0	9	29	33.3%	20	29.4%
Baltimore County	1	0	0	0	2	0	0	0	0	1	0	2	6	6.9%	5	7.4%
Calvert	0	0	0	0	0	0	0	0	0	0	0	0	0	0.0%	0	0.0%
Caroline	0	2	0	0	0	0	0	0	0	0	0	0	2	2.3%	1	1.5%
Carroll	1	0	0	0	0	0	0	0	0	0	0	0	1	1.1%	1	1.5%
Cecil	0	0	0	0	0	0	0	0	0	0	0	0	0	0.0%	0	0.0%
Charles	1	0	0	0	0	0	0	0	0	0	0	0	1	1.1%	1	1.5%
Dorchester	1	0	0	0	0	0	0	1	0	0	0	0	2	2.3%	2	2.9%
Frederick	0	1	0	0	0	0	0	0	0	0	0	0	1	1.1%	1	1.5%
Garrett	0	0	0	0	0	0	0	0	0	0	0	0	0	0.0%	0	0.0%
Harford	0	0	0	0	0	0	0	0	0	0	0	2	2	2.3%	2	2.9%
Howard	0	0	0	0	0	0	0	0	0	3	0	1	4	4.6%	3	4.4%
Kent	0	0	0	0	0	0	0	0	0	0	0	0	0	0.0%	0	0.0%
Montgomery	0	0	0	0	0	0	1	0	0	0	1	2	4	4.6%	3	4.4%
Prince George	9	1	2	0	0	0	1	1	0	3	0	2	19	21.8%	16	23.5%
Queen Anne	0	0	0	0	0	0	0	0	0	0	0	0	0	0.0%	0	0.0%
St. Mary's	0	0	0	0	0	0	0	0	0	0	0	0	0	0.0%	0	0.0%
Somerset	0	0	0	0	0	0	0	0	0	0	0	0	0	0.0%	0	0.0%
Talbot	0	0	0	0	0	0	0	0	0	0	0	0	0	0.0%	0	0.0%
Washington	0	0	0	1	0	1	0	1	0	0	0	0	3	3.4%	3	4.4%
Wicomico	0	0	0	0	0	0	0	0	0	1	0	0	1	1.1%	1	1.5%
Worcester	0	0	0	0	0	0	0	0	0	0	0	0	0	0.0%	0	0.0%
TOTAL FIRE DEATHS	21	7	5	7	6	4	2	3	1	9	1	21	87	100%	68	100%
Column % of All Fire Death	24%	8%	6%	8%	7%	5%	2%	3%	1%	10%	1%	24%				
TOTAL FATAL FIRES	16	6	4	4	3	3	2	3	1	8	1	17				
Column % of All Fatal Fires	24%	9%	6%	6%	4%	4%	3%	4%	1%	12%	1%	25%				

Office of the State Fire Marshal

FATAL FIRES IN MARYLAND
CY 2004

COUNTY	FIRE CAUSE												FATAL FIRES		FIRE DEATHS	
	Smoking	Electrical	Candles	Child Play	Cooking	Arson	Suicide	Heating Related	Open/Unattended Fire	Vehicle Accident	Other	Under Invest/Undetermined	Total Fires	Percent of Total	Total Deaths	Percent of Total
Allegany	0	0	0	0	0	0	0	0	0	0	0	0	0	0.0%	0	0.0%
Anne Arundel	4	1	0	1	0	0	0	0	0	0	0	3	9	13.2%	12	13.8%
Baltimore City	2	2	2	2	2	2	0	0	1	1	0	6	20	29.4%	29	33.3%
Baltimore County	1	0	0	0	1	0	0	0	0	1	0	2	5	7.4%	6	6.9%
Calvert	0	0	0	0	0	0	0	0	0	0	0	0	0	0.0%	0	0.0%
Caroline	0	1	0	0	0	0	0	0	0	0	0	0	1	1.5%	2	2.3%
Carroll	1	0	0	0	0	0	0	0	0	0	0	0	1	1.5%	1	1.1%
Cecil	0	0	0	0	0	0	0	0	0	0	0	0	0	0.0%	0	0.0%
Charles	1	0	0	0	0	0	0	0	0	0	0	0	1	1.5%	1	1.1%
Dorchester	1	0	0	0	0	0	0	1	0	0	0	0	2	2.9%	2	2.3%
Frederick	0	1	0	0	0	0	0	0	0	0	0	0	1	1.5%	1	1.1%
Garrett	0	0	0	0	0	0	0	0	0	0	0	0	0	0.0%	0	0.0%
Harford	0	0	0	0	0	0	0	0	0	0	0	2	2	2.9%	2	2.3%
Howard	0	0	0	0	0	0	0	0	0	2	0	1	3	4.4%	4	4.6%
Kent	0	0	0	0	0	0	0	0	0	0	0	0	0	0.0%	0	0.0%
Montgomery	0	0	0	0	0	0	1	0	0	0	1	1	3	4.4%	4	4.6%
Prince George	6	1	2	0	0	0	1	1	0	3	0	2	16	23.5%	19	21.8%
Queen Anne	0	0	0	0	0	0	0	0	0	0	0	0	0	0.0%	0	0.0%
St. Mary's	0	0	0	0	0	0	0	0	0	0	0	0	0	0.0%	0	0.0%
Somerset	0	0	0	0	0	0	0	0	0	0	0	0	0	0.0%	0	0.0%
Talbot	0	0	0	0	0	0	0	0	0	0	0	0	0	0.0%	0	0.0%
Washington	0	0	0	1	0	1	0	1	0	0	0	0	3	4.4%	3	3.4%
Wicomico	0	0	0	0	0	0	0	0	0	1	0	0	1	1.5%	1	1.1%
Worcester	0	0	0	0	0	0	0	0	0	0	0	0	0	0.0%	0	0.0%
TOTAL FATAL FIRE	16	6	4	4	3	3	2	3	1	8	1	17	68	100%	87	100%
Column Percent of Total	24%	9%	6%	6%	4%	4%	3%	4%	1%	12%	1%	25%				

Office of the State Fire Marshal

FIRE DEATHS IN MARYLAND

FIRE CAUSE	CY 2002		CY 2003		CY 2004	
	Number of Deaths	Percent of Total	Number of Deaths	Percent of Total	Number of Deaths	Percent of Total
Smoking	15	20.0%	7	9.9%	21	24.1%
Vehicle Accident	4	5.3%	4	5.6%	9	10.3%
Electrical Malfunction	9	12.0%	12	16.9%	7	8.0%
Child Playing	3	4.0%	0	0.0%	7	8.0%
Cooking Related	4	5.3%	8	11.3%	6	6.9%
Candles Unattended	3	4.0%	7	9.9%	5	5.7%
Arson/Arson Homicide	11	14.7%	1	1.4%	4	4.6%
Heating Related	0	0.0%	1	1.4%	3	3.4%
Suicide	0	0.0%	0	0.0%	2	2.3%
Combustibles too close	4	5.3%	3	4.2%	0	0.0%
Arson Suicide	1	1.3%	2	2.8%	0	0.0%
Unattended Fire	5	6.7%	1	1.4%	0	0.0%
Other	2	2.7%	4	5.6%	2	2.3%
Undetermined	14	18.7%	21	29.6%	21	24.1%
TOTAL DEATHS	75	100.0%	71	100.0%	87	100.0%
*Heating Includes:						
Kerosene Heater	0		1		2	
Space/Bsbrd Heater	0		0		0	
Furnace	0		0		0	
Faulty Chimney	0		0		1	

DEATH CAUSE	CY 2002		CY 2003		CY 2004	
Smoke Inhalation/Asphyxia	34	45.3%	38	53.5%	25	28.7%
Burns	19	25.3%	8	11.3%	13	14.9%
Smoke Inhalation & Burns	18	24.0%	19	26.8%	42	48.3%
Other	4	5.3%	6	8.5%	7	8.0%
TOTAL DEATHS	75	100.0%	71	100.0%	87	100.0%

SEX OF VICTIM	CY 2002		CY 2003		CY 2004	
Male	45	60.0%	38	53.5%	34	39.1%
Female	30	40.0%	33	46.5%	53	60.9%
TOTAL DEATHS	75	100.0%	71	100.0%	87	100.0%

AGE OF VICTIM	CY 2002		CY 2003		CY 2004	
0 - 4	5	6.7%	4	5.6%	6	6.9%
5 - 9	8	10.7%	3	4.2%	9	10.3%
10 - 14	4	5.3%	3	4.2%	1	1.1%
15 - 24	3	4.0%	7	9.9%	4	4.6%
25 - 34	8	10.7%	8	11.3%	6	6.9%
35 - 44	11	14.7%	9	12.7%	10	11.5%
45 - 54	8	10.7%	10	14.1%	14	16.1%
55 - 64	7	9.3%	10	14.1%	10	11.5%
65 - 74	12	16.0%	7	9.9%	12	13.8%
75 - 84	5	6.7%	6	8.5%	10	11.5%
85 +	4	5.3%	4	5.6%	5	5.7%
TOTAL DEATHS	75	100.0%	71	100.0%	87	100.0%

Office of the State Fire Marshal

FIRE DEATHS IN MARYLAND

LOCATION OF FIRE	CY 2002		CY 2003		CY 2004	
	Number of Deaths	Percent of Total	Number of Deaths	Percent of Total	Number of Deaths	Percent of Total
Home	46	61.3%	41	57.7%	62	71.3%
Apartment	12	16.0%	15	21.1%	10	11.5%
Mobile Home/Trailer	5	6.7%	3	4.2%	1	1.1%
Outside	3	4.0%	2	2.8%	4	4.6%
Vehicle	4	5.3%	6	8.5%	10	11.5%
Hotel/Rmng House/Nursng Home	2	2.7%	0	0.0%	0	0.0%
Store/Warehouse/Manufact/Garag	1	1.3%	4	5.6%	0	0.0%
Other	2	2.7%	0	0.0%	0	0.0%
TOTAL DEATHS	75	100.0%	71	100.0%	87	100.0%

AREA OF FIRE ORIGIN	CY 2002		CY 2003		CY 2004	
Living Room	15	20.0%	15	21.1%	21	24.1%
Bedroom	22	29.3%	15	21.1%	14	16.1%
Kitchen	9	12.0%	16	22.5%	11	12.6%
Vehicle	6	8.0%	6	8.5%	10	11.5%
Basement/Utility Room	3	4.0%	1	1.4%	9	10.3%
Porch/Balcony	0	0.0%	2	2.8%	4	4.6%
Outside	3	4.0%	2	2.8%	3	3.4%
Hallway/Entrance/Foyer/Stairway	7	9.3%	4	5.6%	2	2.3%
Family Room/Den	4	5.3%	2	2.8%	2	2.3%
Dining Room	4	5.3%	1	1.4%	2	2.3%
Bathroom	0	0.0%	2	2.8%	1	1.1%
Garage	0	0.0%	0	0.0%	1	1.1%
Shop Floor/Equipment Room	0	0.0%	3	4.2%	0	0.0%
Other	2	2.7%	2	2.8%	7	8.0%
TOTAL DEATHS	75	100.0%	71	100.0%	87	100.0%

SMOKE ALARM STATUS IN STRUCTURE FIRES	CY 2002		CY 2003		CY 2004	
Present/Operated	10	15.2%	22	37.3%	17	23.3%
Present/Did Not Operate	17	25.8%	3	5.1%	3	4.1%
Present/Function Undetermined	13	19.7%	11	18.6%	15	20.5%
NO DETECTOR PRESENT	18	27.3%	11	18.6%	16	21.9%
Undetermined	8	12.1%	12	20.3%	22	30.1%
TOTAL STRUCTURE FIRE DEATHS	66	100.0%	59	100.0%	73	100.0%

Office of the State Fire Marshal

FIRE DEATHS IN MARYLAND

TIME OF ALARM	CY 2002		CY 2003		CY 2004	
	Number of Deaths	Percent of Total	Number of Deaths	Percent of Total	Number of Deaths	Percent of Total
0001 - 0159	6	8.0%	8	11.3%	12	13.8%
0200 - 0359	14	18.7%	13	18.3%	16	18.4%
0400 - 0559	9	12.0%	6	8.5%	12	13.8%
0600 - 0759	11	14.7%	10	14.1%	5	5.7%
0800 - 0959	6	8.0%	7	9.9%	3	3.4%
1000 - 1159	2	2.7%	7	9.9%	6	6.9%
1200 - 1359	3	4.0%	2	2.8%	4	4.6%
1400 - 1559	4	5.3%	2	2.8%	6	6.9%
1600 - 1759	4	5.3%	2	2.8%	7	8.0%
1800 - 1959	5	6.7%	2	2.8%	3	3.4%
2000 - 2159	5	6.7%	3	4.2%	3	3.4%
2200 - 2400	6	8.0%	9	12.7%	10	11.5%
TOTAL DEATHS	75	100.0%	71	100.0%	87	100.0%

DAY OF WEEK	CY 2002		CY 2003		CY 2004	
Sunday	10	13.3%	8	11.3%	15	17.2%
Monday	8	10.7%	12	16.9%	11	12.6%
Tuesday	7	9.3%	9	12.7%	13	14.9%
Wednesday	18	24.0%	10	14.1%	7	8.0%
Thursday	7	9.3%	12	16.9%	12	13.8%
Friday	12	16.0%	8	11.3%	18	20.7%
Saturday	13	17.3%	12	16.9%	11	12.6%
TOTAL DEATHS	75	100.0%	71	100.0%	87	100.0%

FIRE FATALITIES BY MONTH	CY 2002		CY 2003		CY 2004	
January	11	14.7%	4	5.6%	18	20.7%
February	8	10.7%	15	21.1%	11	12.6%
March	7	9.3%	8	11.3%	13	14.9%
April	6	8.0%	4	5.6%	9	10.3%
May	4	5.3%	3	4.2%	6	6.9%
June	5	6.7%	5	7.0%	3	3.4%
July	1	1.3%	0	0.0%	0	0.0%
August	6	8.0%	4	5.6%	6	6.9%
September	4	5.3%	2	2.8%	4	4.6%
October	13	17.3%	9	12.7%	5	5.7%
November	3	4.0%	8	11.3%	4	4.6%
December	7	9.3%	9	12.7%	8	9.2%
TOTAL DEATHS	75	100.0%	71	100.0%	87	100.0%

Office of the State Fire Marshal

FIRE DEATHS IN MARYLAND

COUNTY	CY 2000	CY 2001	CY 2002	CY 2003	CY 2004	5-Year Average	Percent of State Total	FIRE DEATH RATE*
Allegany	0	1	3	1	0	1.0	1.3%	1.3
Anne Arundel	3	5	5	4	12	5.8	7.4%	1.2
Baltimore City	26	23	24	28	29	26.0	33.0%	4.0
Baltimore County	6	21	11	9	6	10.6	13.5%	1.4
Calvert	0	0	0	0	0	0.0	0.0%	0.0
Caroline	0	0	0	1	2	0.6	0.8%	2.0
Carroll	2	1	1	0	1	1.0	1.3%	0.7
Cecil	4	0	4	2	0	2.0	2.5%	2.3
Charles	1	1	2	1	1	1.2	1.5%	1.0
Dorchester	3	0	0	0	2	1.0	1.3%	3.3
Frederick	3	2	0	0	1	1.2	1.5%	0.6
Garrett	1	0	0	0	0	0.2	0.3%	0.7
Harford	0	5	3	3	2	2.6	3.3%	1.2
Howard	1	0	0	0	4	1.0	1.3%	0.4
Kent	1	1	0	0	0	0.4	0.5%	2.1
Montgomery	5	11	8	5	4	6.6	8.4%	0.8
Prince George	4	13	11	7	19	10.8	13.7%	1.3
Queen Anne	0	2	1	1	0	0.8	1.0%	2.0
St. Mary's	1	0	0	2	0	0.6	0.8%	0.7
Somerset	1	0	0	0	0	0.2	0.3%	0.8
Talbot	0	2	0	0	0	0.4	0.5%	1.2
Washington	0	0	2	5	3	2.0	2.5%	1.5
Wicomico	3	3	0	1	1	1.6	2.0%	1.9
Worcester	2	3	0	1	0	1.2	1.5%	2.6
TOTAL FIRE DEATHS	67	94	75	71	87	79	100.0%	1.5

FIRE DEATH RATE** 1.3 1.8 1.4 1.3 1.6

*DEATH RATE: Number of civilian fire deaths per 100,000 population

**Rates are based on the 2000 census estimates

NOTES