



Vehicle Safety Inspection Program Bulletin

ASED-018

Date: January 01, 2019 (Original Special Order Issued 08/01/1995)

Bulletin: All Inspection Station Personnel

From: Automotive Safety Enforcement Division

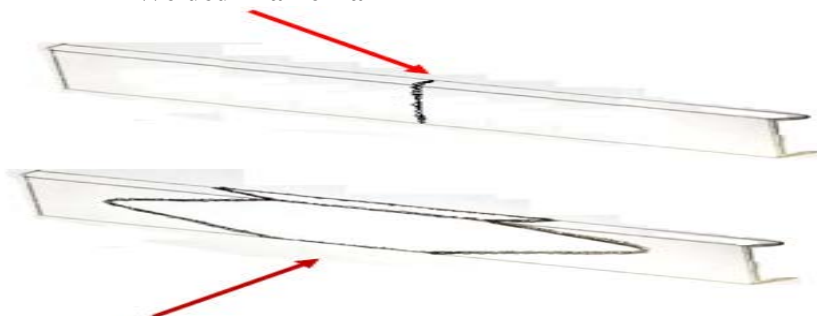
RE: **Floor, Trunk Pan, Frame & Unibody Repair**

Repair Materials and Methods - Repairs will meet or exceed the manufacturers original design. Most manufacturer approved materials and methods are provided and published as policy by the *Inter-Industry Conference on Auto Collision Repair*, (I-CAR). Repairs must be properly sealed to prevent exhaust fumes from entering the passenger compartment.

Floor and Trunk Pan - Certain areas of a vehicle floor may provide structural integrity or component mounting points, and therefore will require careful inspection of repaired areas and for improper repairs, damage, or distortion which weakens the structural integrity.

Frame and Unibody - Frame repair must be welded and reinforced by “**fish-plate**” when sectioning or joining frame rails. Sub-Frame repair is not recommended by most manufacturers, and should be only be repaired by replacement rather than by straightening or welding. Bolt on fenders, hoods, doors, etc are generally not structural components of unibody construction. Welded/bonded components are generally structural.

Welded Frame Rail



Welded Frame Rail With “Fish-Plate” Installed

*If you have additional questions, please feel free to contact ASED at:
410-768-7388 or MSP.ASED@maryland.gov*